

Reedsburg Human Services Cameras and Paging system upgrade **Addendum**

1. Sauk County will coordinate getting the camera Cat 6 wire to the final exterior location where an exterior junction box will be placed.
2. Cat 6 cable will need to be placed in water tight conduit to power up the surface mounted camera.
3. Sauk County is providing a Cisco 9300 POE switch for the Reedsburg Human Services building.
4. Vendors will need to provide any power injectors for cameras if they are needed for the project at the Reedsburg Human Services building. Sauk County will provide POE injectors at the tower locations..
5. Would you accept a proposal with Verkada products instead of Axis?
No, Sauk County is looking to only use Axis brand cameras
6. Do you have blueprints for the Human Services building in Reedsburg? I do see the maps with speaker and camera locations, which is helpful, but I'm wondering what the ceiling consists of and how high it is.

Prints for the Reedsburg are available upon request.

The ceiling is 2X4 suspended ceiling and interlocking 12" X 12" ceiling tiles.



The ceiling height on both the lower and upper levels is 8' floor to ceiling tile.

7. Also, I see that Sauk County is providing cabling and connections at each tower location. Will the height of each camera be obvious to our techs in the field? And will this be ladder high or lift high?

The height of the cameras will be set at 10-12' off the ground level on the corners of the building. A junction box will be set for the cat 6 connection to the corner mounted camera. All camera mounting work can be completed from a ladder

Tower Site Camera location

19 Cameras

Internal camera 360 fish eye camera

External Corner mounted 270 degree view

Sauk County to run all cabling

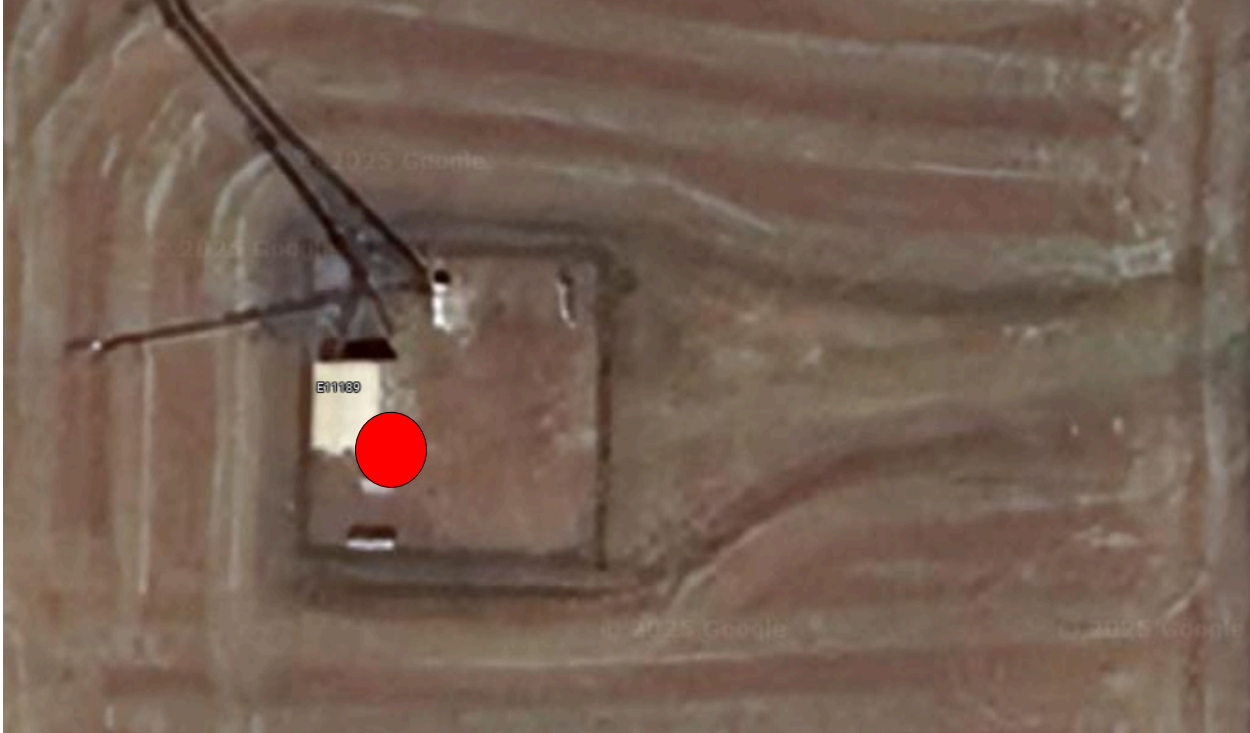
Lake Delton (2)



Tower Road (2)



Sauk City (2)



Spring Green (2)



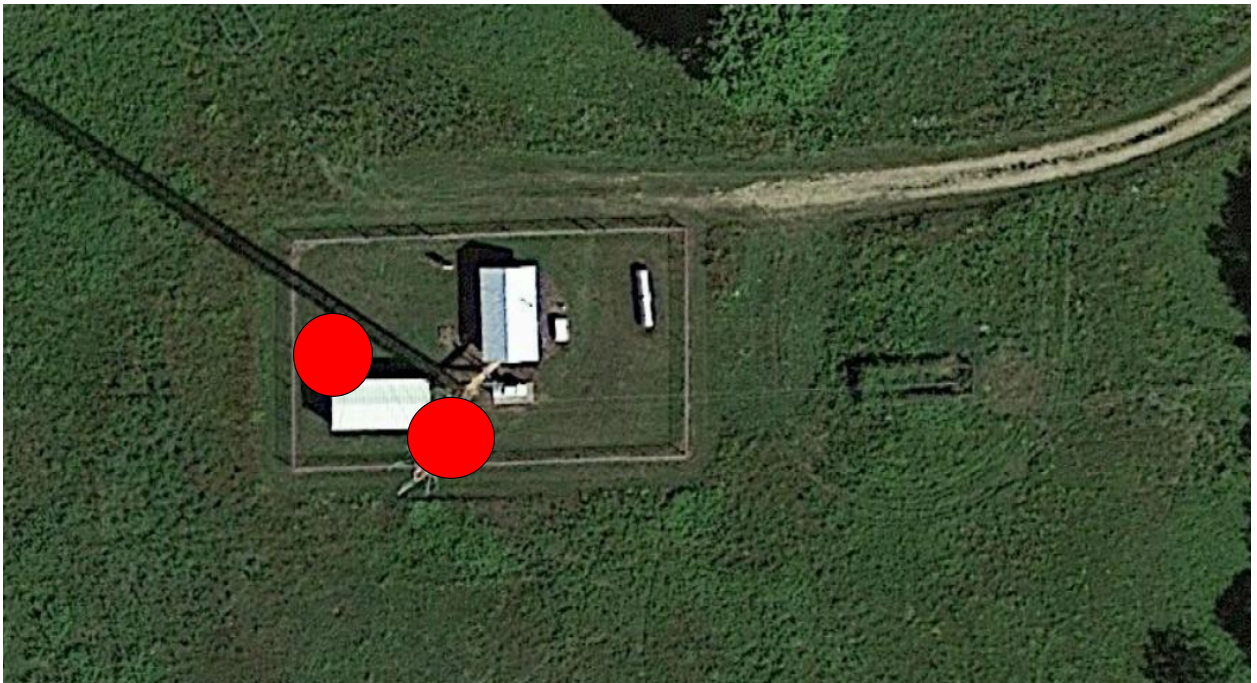
HillPoint Tower (3)



Reedsburg (2)



Happy Hill (3)



LaValle (3)

