

Reedsburg Human Services Cameras and Paging system upgrade
Addendum 1.2

1. Sauk County will coordinate getting the camera Cat 6 wire to the final exterior location where an exterior junction box will be placed.
2. Cat 6 cable will need to be placed in water tight conduit to power up the surface mounted camera.
3. Sauk County is providing a Cisco 9300 POE switch for the Reedsburg Human Services building.
4. Vendors will need to provide any power injectors for cameras if they are needed for the project at the Reedsburg Human Services building. Sauk County will provide POE injectors at the tower locations..
5. Would you accept a proposal with Verkada products instead of Axis?
No, Sauk County is looking to only use Axis brand cameras
6. Do you have blueprints for the Human Services building in Reedsburg? I do see the maps with speaker and camera locations, which is helpful, but I'm wondering what the ceiling consists of and how high it is.

Prints for the Reedsburg are available upon request.

The ceiling is 2X4 suspended ceiling and interlocking 12" X 12" ceiling tiles.



The ceiling height on both the lower and upper levels is 8' floor to ceiling tile.

7. Also, I see that Sauk County is providing cabling and connections at each tower location. Will the height of each camera be obvious to our techs in the field? And will this be ladder high or lift high?

The height of the cameras will be set at 10-12' off the ground level on the corners of the building. A junction box will be set for the cat 6 connection to the corner mounted camera. All camera mounting work can be completed from a ladder

8. Are we the integrator to provide the server or is it Sauk County?

Yes, see Spec 2.5 of the RFP

9. Is 1 NVR/Server to be used for the entire project or will there need to be multiple for the various locations?

Yes, One (1) NVR for the entire project

- Where will it be located?

Reedsburg Human Service Building

- How does Sauk County want the server to be integrated into the current system?

See Spec 2.12 of the RFP

- Are cameras integrated with the server?

Yes, see Spec 2.6 of the RFP

10. What sensor resolution is Sauk County wanting and/or required?

Camera sensor will be set to trigger motion with a setting of 5 second pre-motion and 5 seconds post-motion

- What size megapixel (2 megapixels 4, 6, 8, etc.? Will this be the same for both interior and exterior. Do you want a higher resolution for exterior cameras, or vice versa?

4 mega pixel cameras for all locations identified in the RFP

11. For the towers, do we need a recording device for each tower, or will the cameras be recording over the network back to the server?

Cameras are going to be networked back the Reedsburg Human Services NVR

12. For the cameras at the tower are you wanting SD cards, if so, what size?

No., Camera are to be networked and need to meet spec 2.6 of the RFP

13. For camera recording, what is the resolution Sauk County wants to record at?

The highest quality recording should be the setting on the camera in the H264 video format with 10 frames per second record rate.

Tower Site Camera location

19 Cameras

Internal camera 360 fish eye camera

External Corner mounted 270 degree view

Sauk County to run all cabling

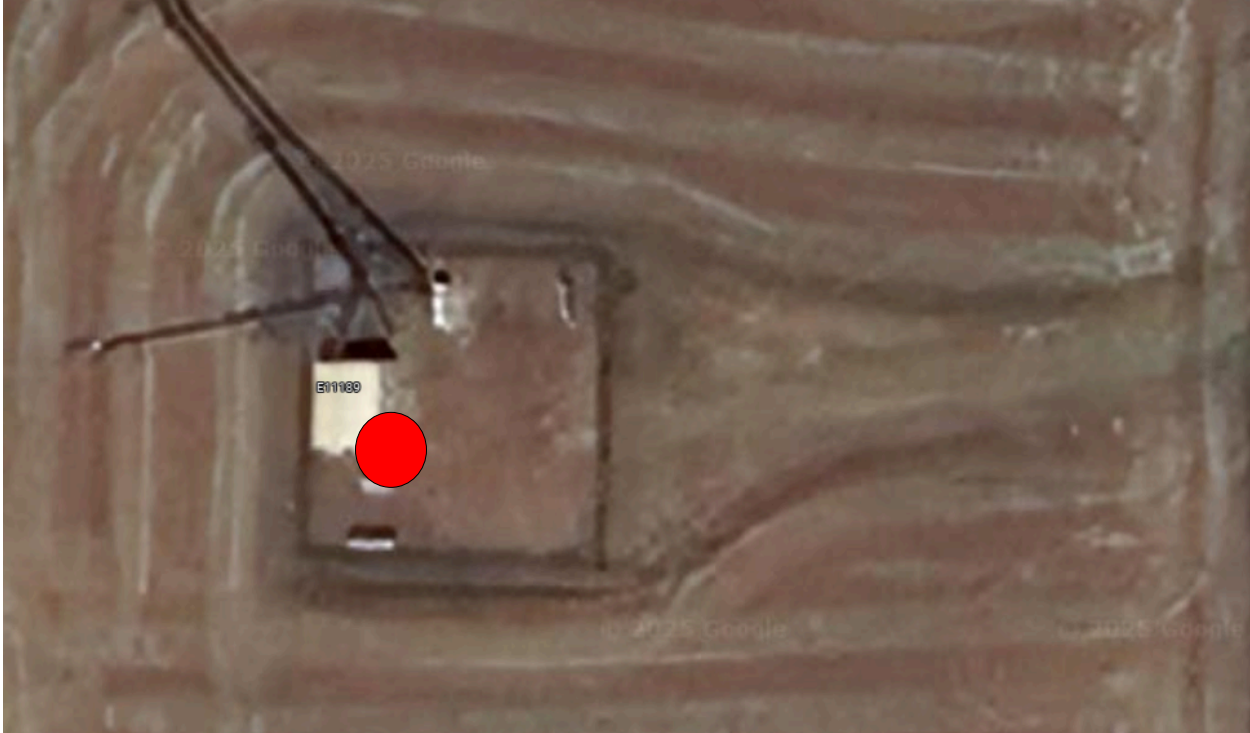
Lake Delton (2)



Tower Road (2)



Sauk City (2)



Spring Green (2)



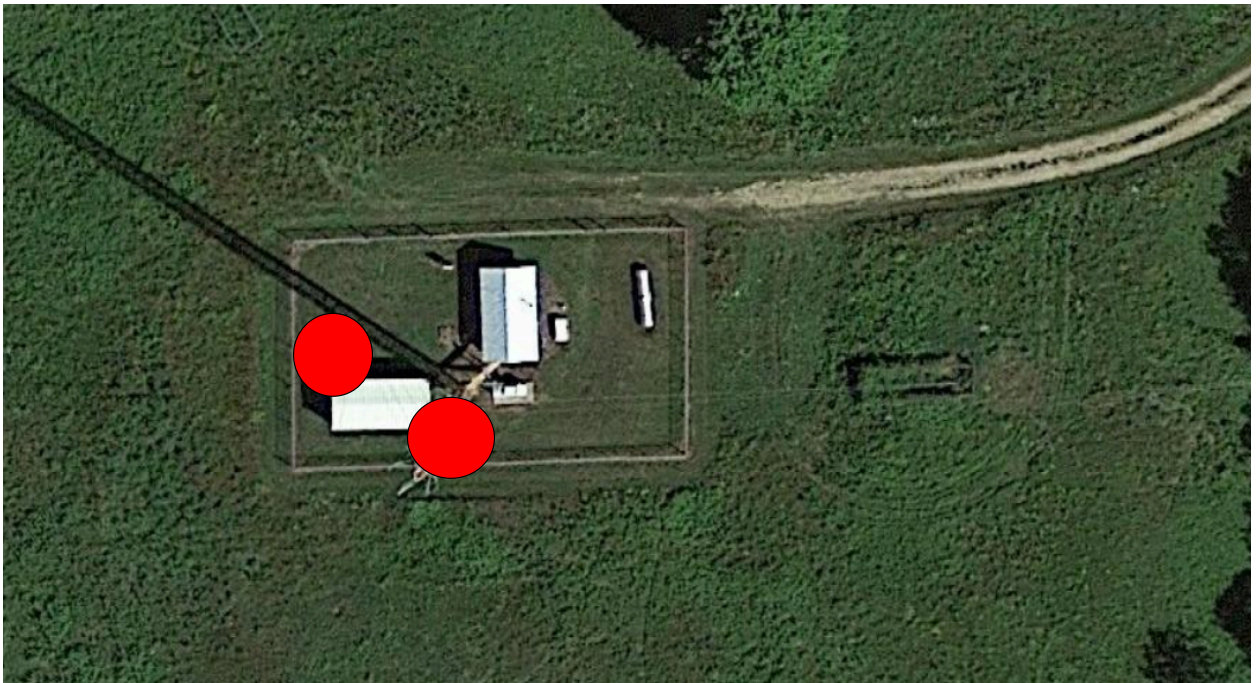
HillPoint Tower (3)



Reedsburg (2)



Happy Hill (3)



LaValle (3)

