

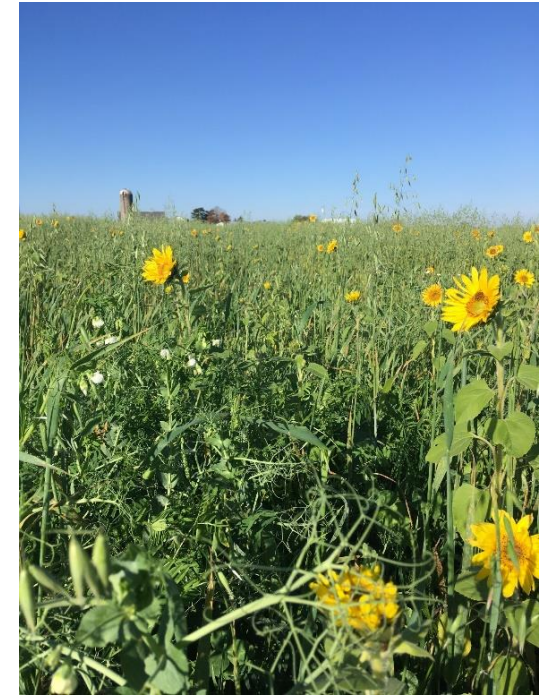
We are here to work with you!

Agricultural runoff, including soil erosion, can impair the streams we use for fishing and swimming and harm the groundwater that supplies our drinking water.

These conservation practices seek to protect our ground and surface water, both in the interest of public health and the environment.

About Us

The Sauk County Land Resources and Environment Department offers technical assistance to design and implement conservation practices to all county landowners free of charge. Financial assistance may be available through various federal, state and other county programs. Contact us today with any questions or for more information!




Contact Us

Phone: (608) 355-3245

Email: conservation@saukcountywi.gov

Web: www.co.sauk.wi.us/cpz

 www.facebook.com/sauk.lre



**SAUK COUNTY LAND
RESOURCES & ENVIRONMENT**

505 Broadway, Ste. 248
Baraboo, WI 53913

**CONSERVATION
PAYS...**

In your crop fields





How does conservation pay?

Soil loss is expensive! Each ton of soil lost contains 2# Nitrogen, 9# Phosphorus, and 31# Potassium with a value of ~\$12.80/ton.

Fuel costs for tillage are ~\$3.50/ac/yr.

Cover crops can help your bottom line: Soybean yields increase by ~5 bu/ac after cover crops, earning an extra ~\$50/ac/yr.

Cover crops suppress weeds, reducing herbicide costs by ~\$16.20/ac/yr.

Cover crops may generate nitrogen credits, reducing the amount of commercial fertilizer purchased.

Eliminating tillage and keeping living roots in the soil will help build soil structure, increase water infiltration and improve nutrient cycling.

Nutrient management increases farm profitability by better utilization of on-farm nutrients and purchased fertilizer.

Cropland Conservation Practices

- **Cover Crops:** Legumes, grasses and small grains grown as ground cover for erosion control and soil health improvement.
- **Contour Strips:** A planned system of growing alternating strips of forage and tilled crops, usually on the contour, to reduce soil erosion.
- **Contour Farming:** Conducting farming operations on the contour (across the slope) to reduce soil erosion.
- **Conservation Plans:** Individual plans designed to incorporate and manage farming practices in order to meet tolerable soil loss levels.
- **Grass Waterways:** A vegetated channel that prevents soil erosion and gully formation by controlling excess runoff through concentration of water flow.
- **Grade Stabilization Structure:** Reduces the slope and erosion levels of channels to prevent gully formation.
- **Nutrient Management:** Managing the amount, form, placement and timing of crop nutrients for maximum crop production while providing water quality benefits.
- **Sediment Control Basins:** Structures that reduce the transportation of pollutants to surface water and wetlands.



In order to protect Sauk County's most valuable natural resources while maintaining productive agriculture, the support of rural landowners is critical. Thank you for your efforts in maintaining a productive farm and healthy environment.

