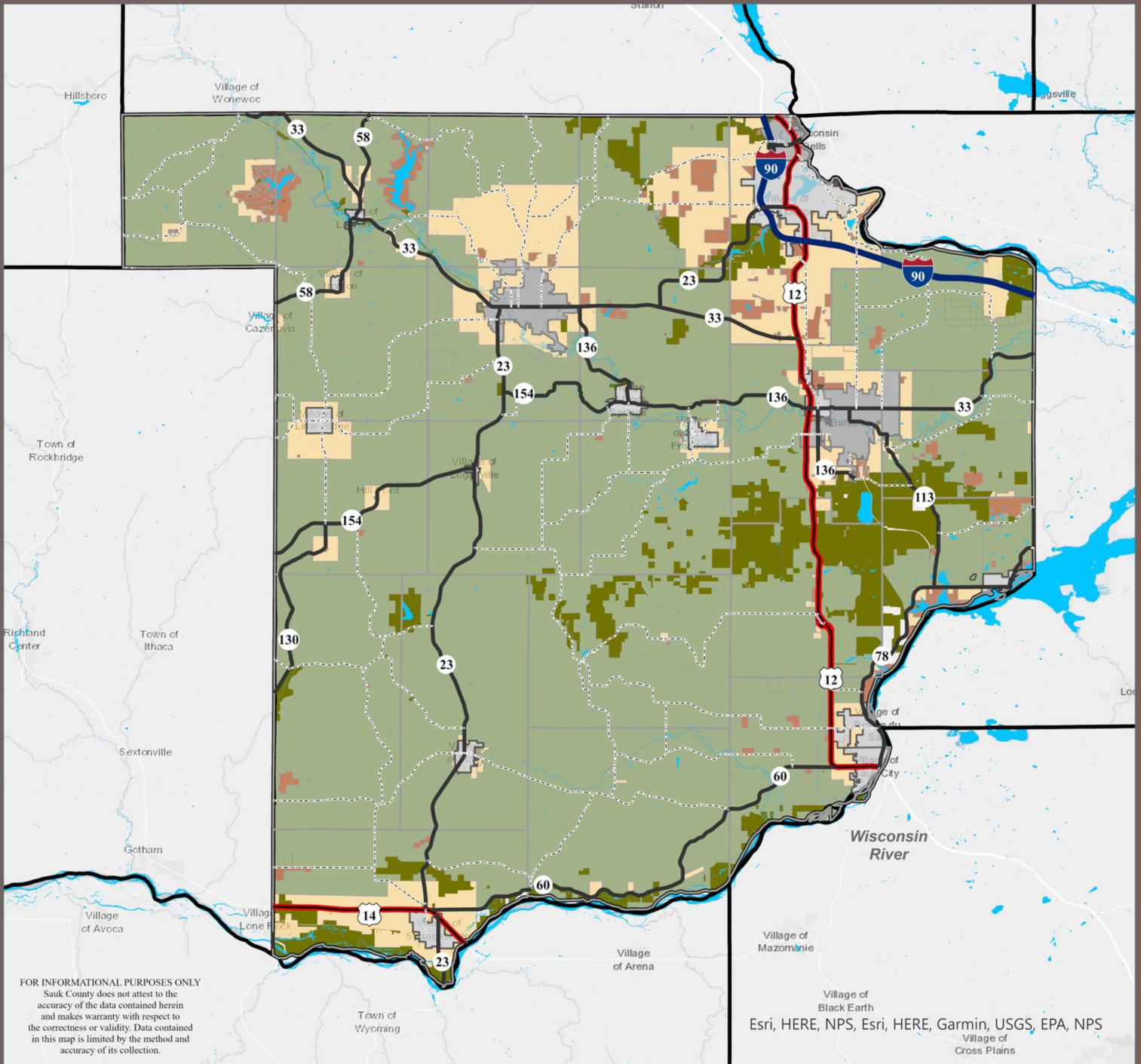


Sauk County Farmland Preservation



Legend

Farmland Preservation

- Farmland Preservation Area
- Transition Area
- Unincorporated Development Area
- Public Open Spaces

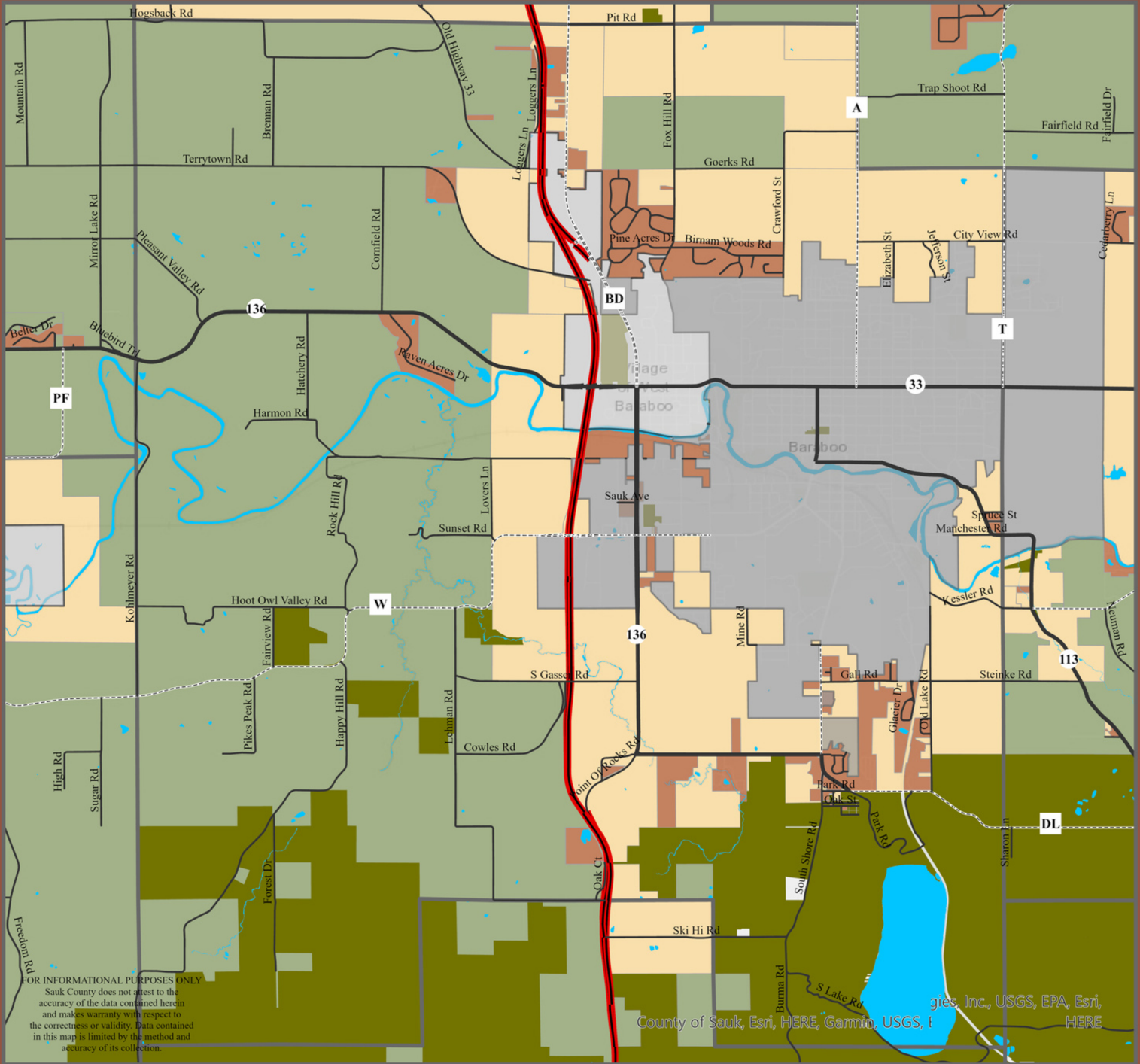
Municipal Boundaries

- Village
- City
- Town
- County Boundaries

Transportation

- U.S. Highway
- Interstate
- State Highway
- County

Sauk County Farmland Preservation Plan: Town of Baraboo



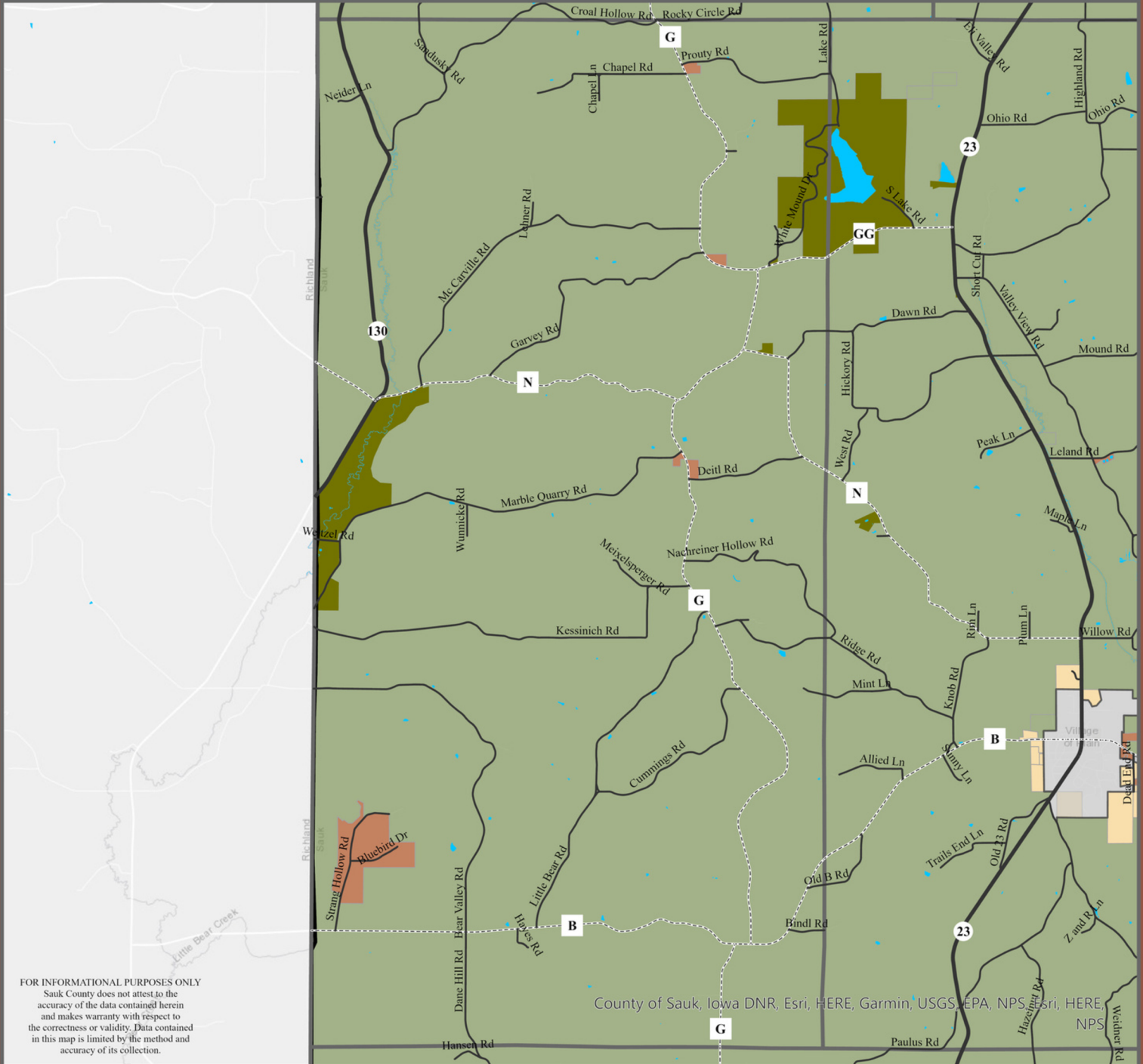
Legend

Farmland Preservation	Municipal Boundaries	Transportation
Farmland Preservation Area	Village	U.S. Highway
Transition Area	City	Interstate
Unincorporated Development Area	Town	State Highway
Public Open Spaces	County Boundaries	County
		Town

Miles
 0 0.75 1.5



Sauk County Farmland Preservation Plan: Town of Bear Creek



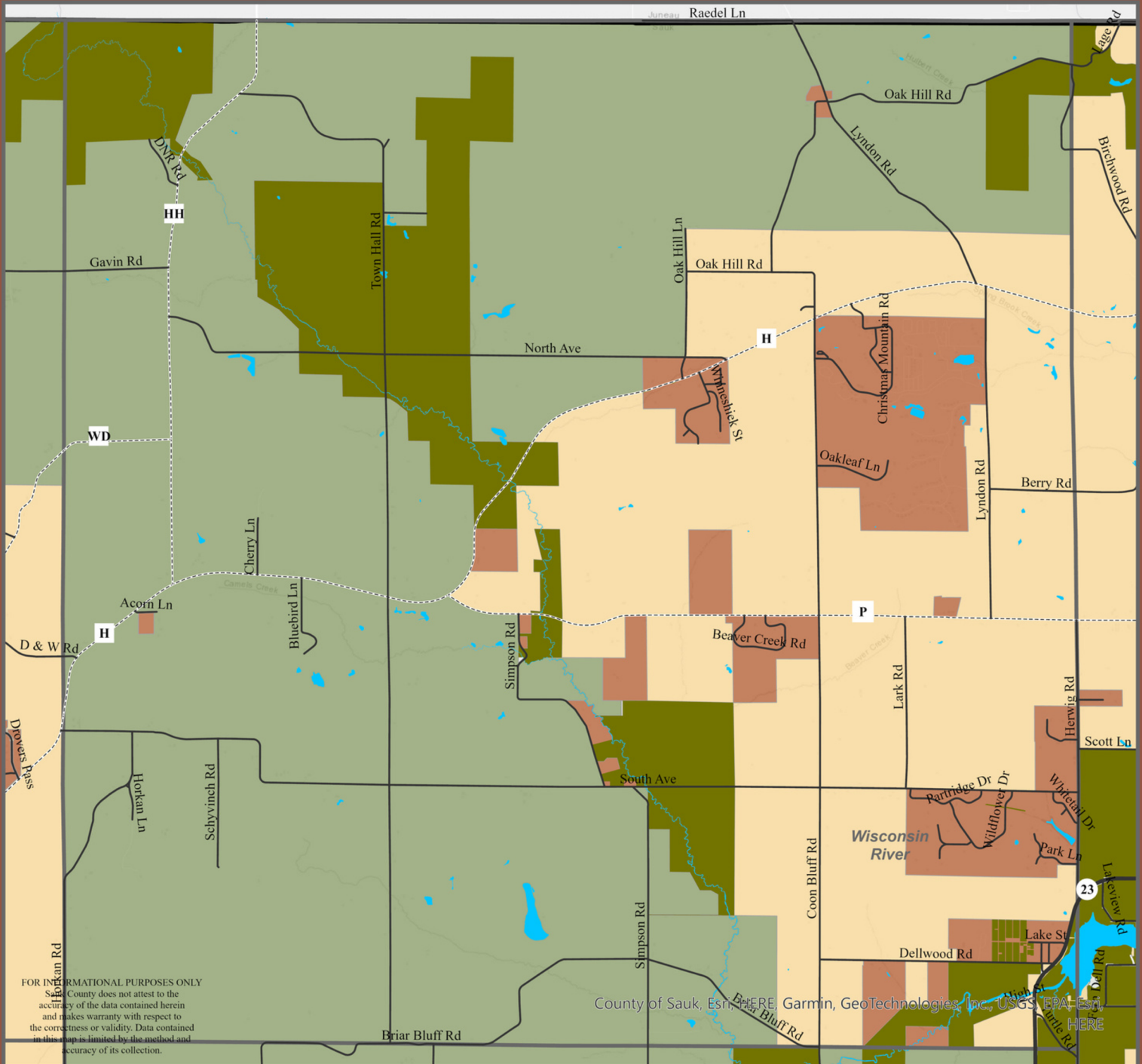
Legend

Farmland Preservation	Municipal Boundaries	Transportation
Farmland Preservation Area	Village	U.S. Highway
Transition Area	City	Interstate
Unincorporated Development Area	Town	State Highway
Public Open Spaces	County Boundaries	County
		Town

Miles
 0 1.25 2.5

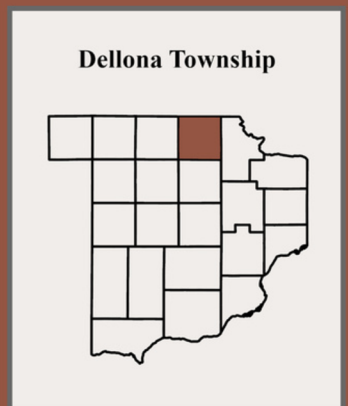
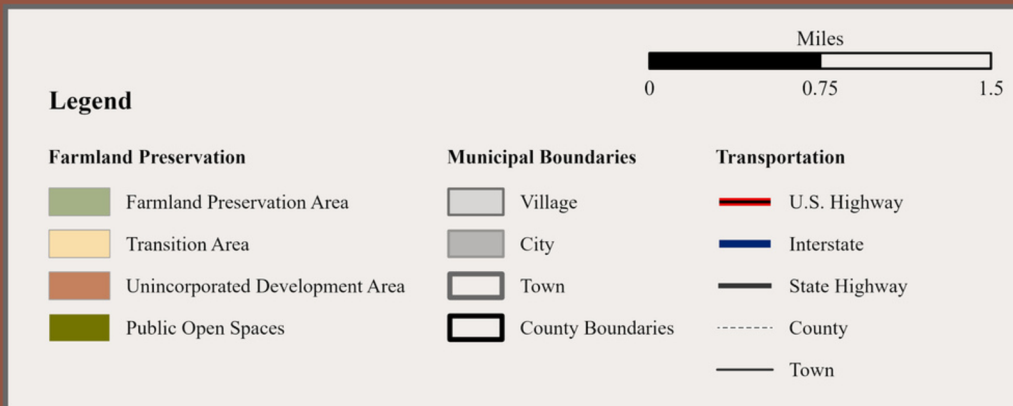


Sauk County Farmland Preservation Plan: Town of Dellona

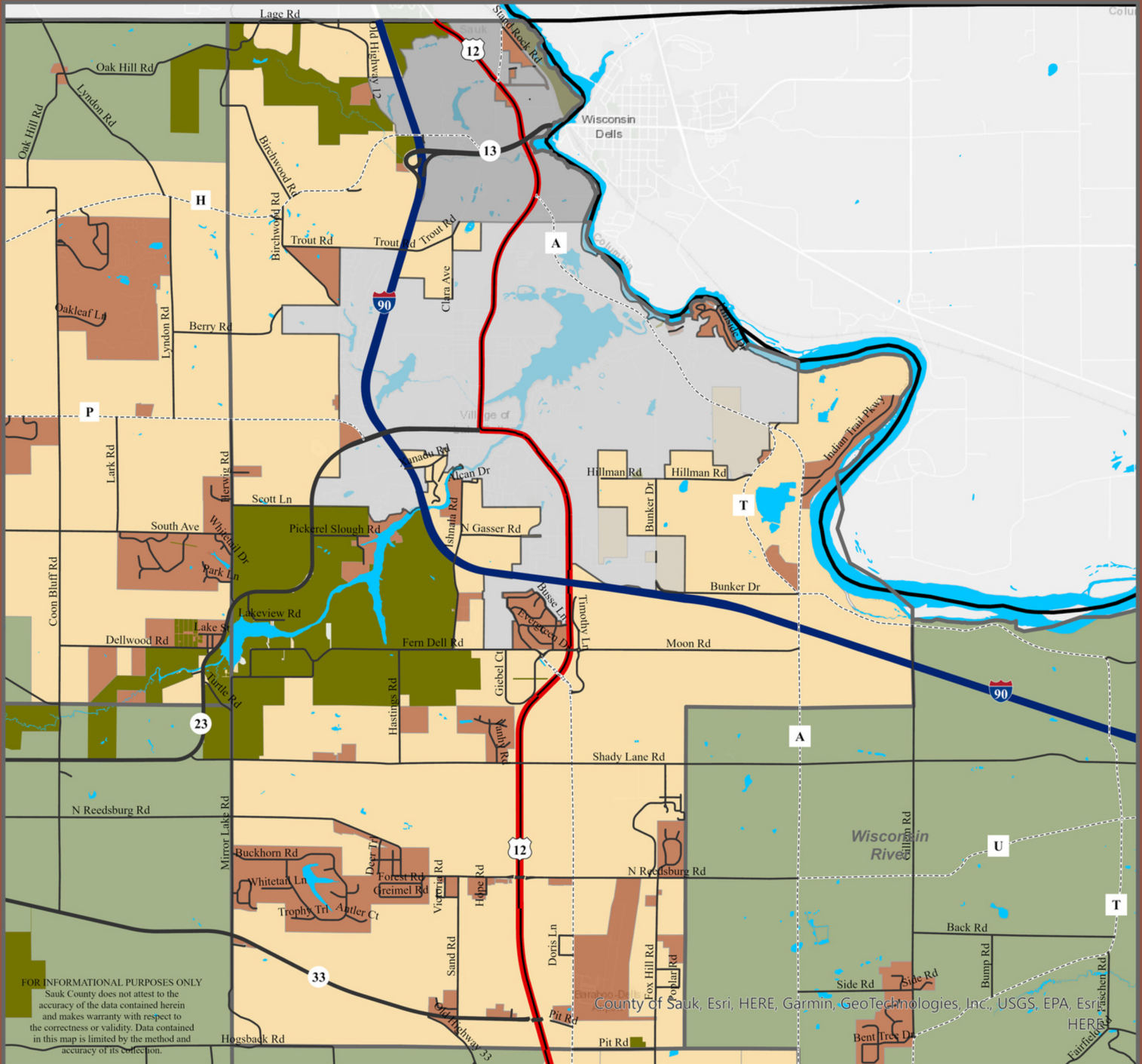


FOR INFORMATIONAL PURPOSES ONLY
 Sauk County does not attest to the accuracy of the data contained herein and makes warranty with respect to the correctness or validity. Data contained in this map is limited by the method and accuracy of its collection.

County of Sauk, Esri, HERE, Garmin, GeoTechnologies, Inc., USGS, EPA, Esri, HERE



Sauk County Farmland Preservation Plan: Town of Delton



FOR INFORMATIONAL PURPOSES ONLY
 Sauk County does not attest to the accuracy of the data contained herein and makes warranty with respect to the correctness or validity. Data contained in this map is limited by the method and accuracy of its collection.

County of Sauk, Esri, HERE, Garmin, GeoTechnologies, Inc., USGS, EPA, Esri, HERE, DeLorme, Intermap, Inc., SwisHort, Bing, Microsoft, and Mapbox

Legend

Farmland Preservation

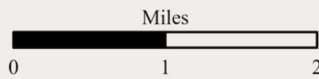
- Farmland Preservation Area
- Transition Area
- Unincorporated Development Area
- Public Open Spaces

Municipal Boundaries

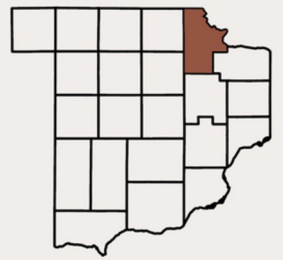
- Village
- City
- Town
- County Boundaries

Transportation

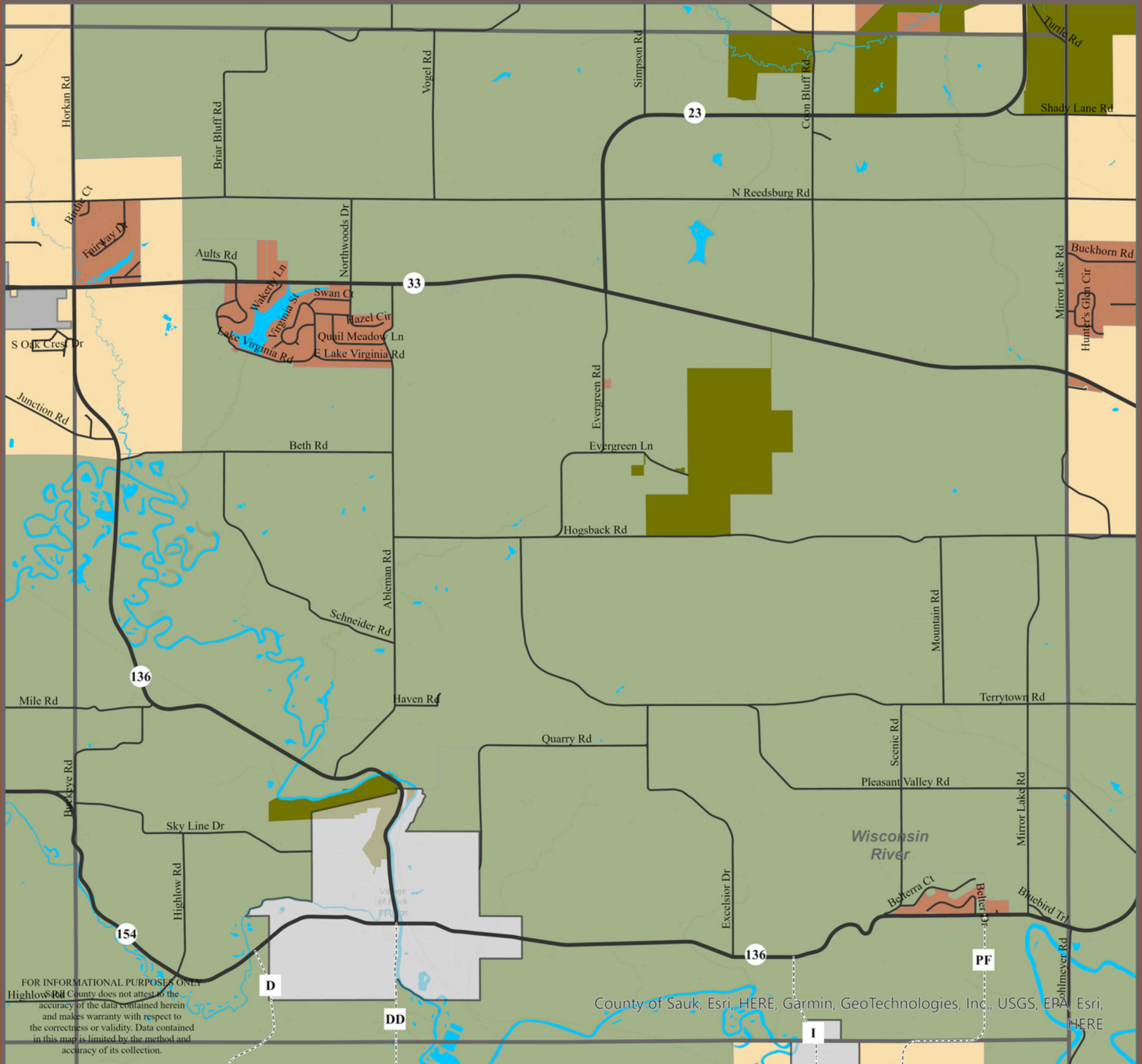
- U.S. Highway
- Interstate
- State Highway
- County
- Town



Delton Township



Sauk County Farmland Preservation Plan: Town of Excelsior



FOR INFORMATIONAL PURPOSES ONLY
 Highwood County does not attest to the accuracy of the data contained herein and makes warranty with respect to the correctness or validity. Data contained in this map is limited by the method and accuracy of its collection.

County of Sauk, Esri, HERE, Garmin, GeoTechnologies, Inc., USGS, EPA, Esri, HERE

Legend

Farmland Preservation

- Farmland Preservation Area
- Transition Area
- Unincorporated Development Area
- Public Open Spaces

Municipal Boundaries

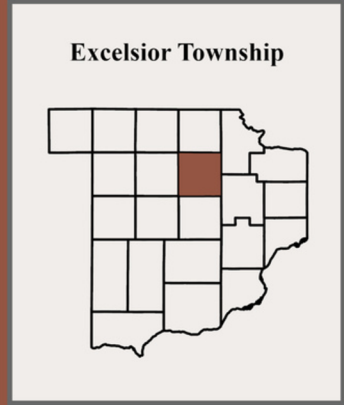
- Village
- City
- Town
- County Boundaries

Miles

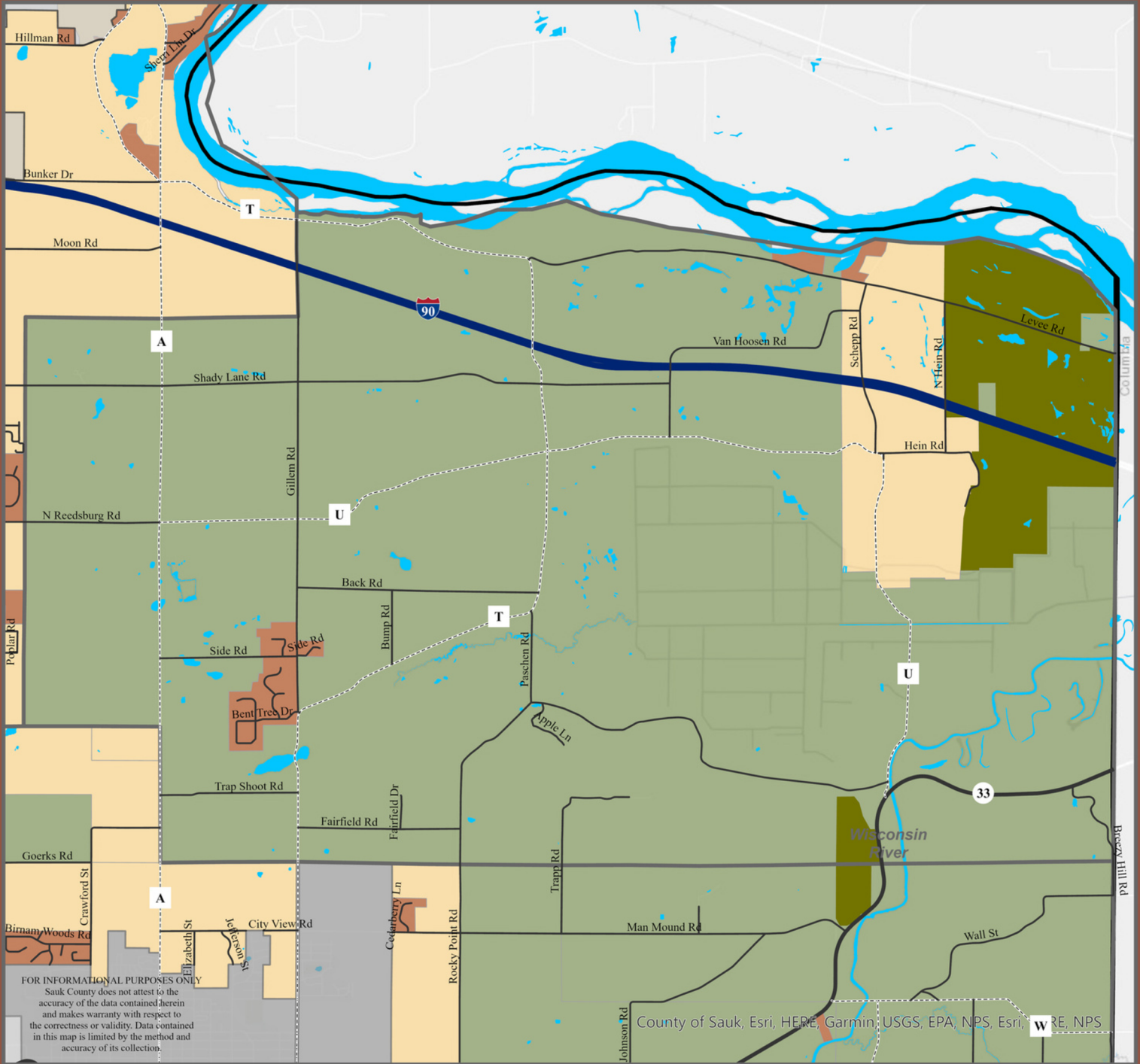
0
0.75
1.5

Transportation

- U.S. Highway
- Interstate
- State Highway
- County
- Town



Sauk County Farmland Preservation Plan: Town of Fairfield



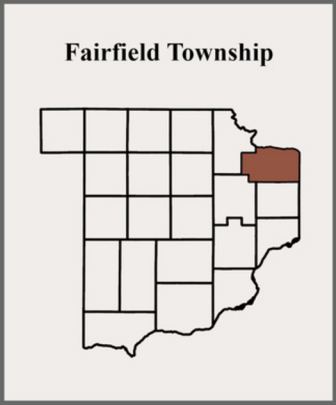
FOR INFORMATIONAL PURPOSES ONLY
 Sauk County does not attest to the accuracy of the data contained herein and makes warranty with respect to the correctness or validity. Data contained in this map is limited by the method and accuracy of its collection.

County of Sauk, Esri, HERE, Garmin, USGS, EPA, NPS, Esri, HERE, NPS

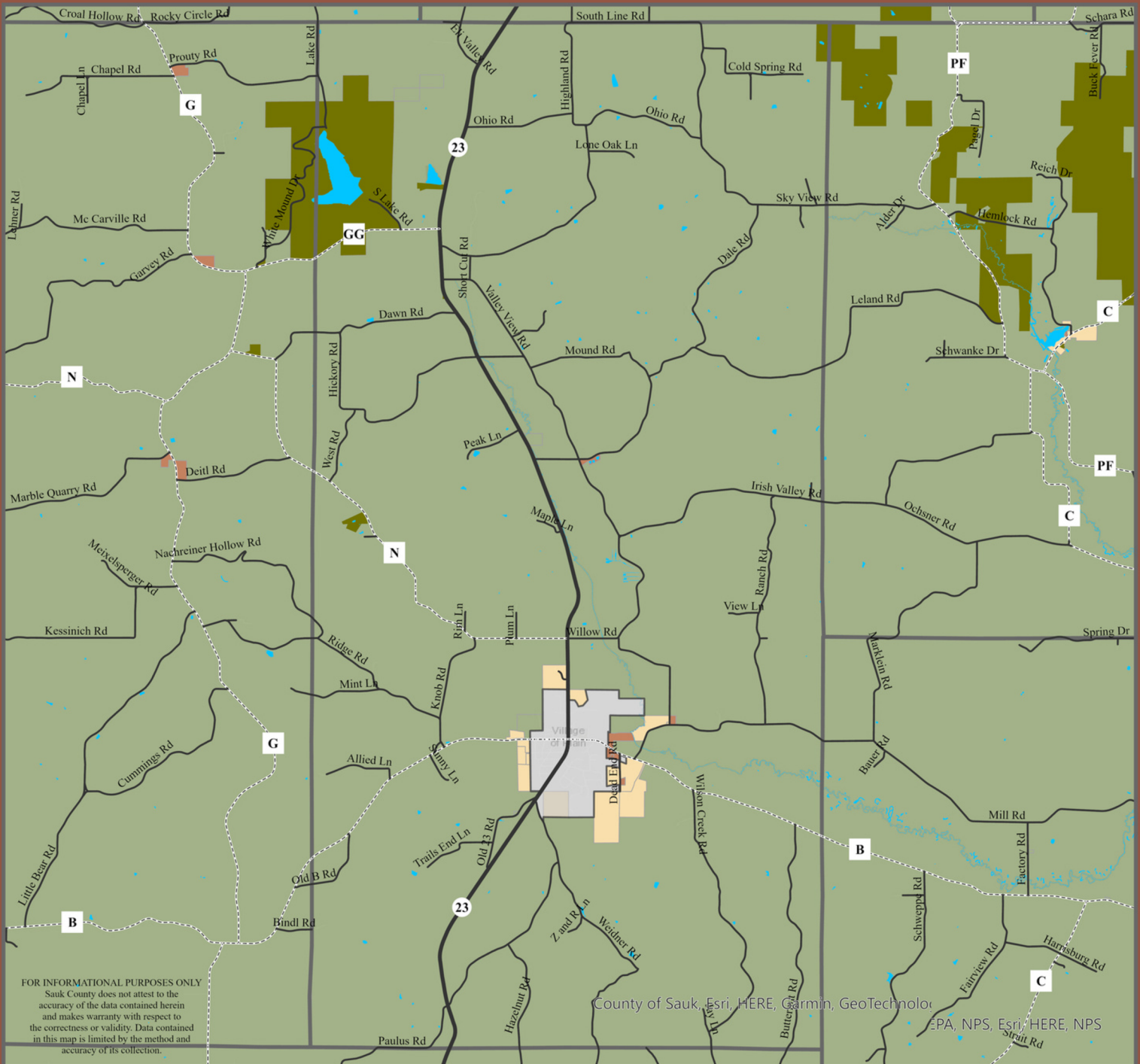
Legend

Farmland Preservation	Municipal Boundaries	Transportation
Farmland Preservation Area	Village	U.S. Highway
Transition Area	City	Interstate
Unincorporated Development Area	Town	State Highway
Public Open Spaces	County Boundaries	County
		Town

Miles
 0 0.75 1.5



Sauk County Farmland Preservation Plan: Town of Franklin



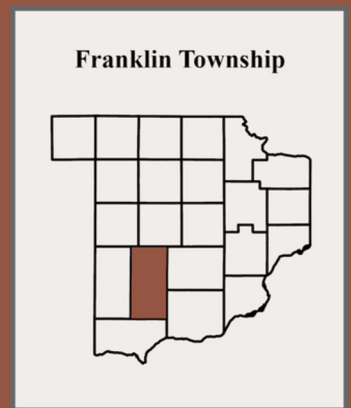
FOR INFORMATIONAL PURPOSES ONLY
 Sauk County does not attest to the accuracy of the data contained herein and makes warranty with respect to the correctness or validity. Data contained in this map is limited by the method and accuracy of its collection.

County of Sauk, Esri, HERE, Garmin, GeoTechnology, EPA, NPS, Esri, HERE, NPS

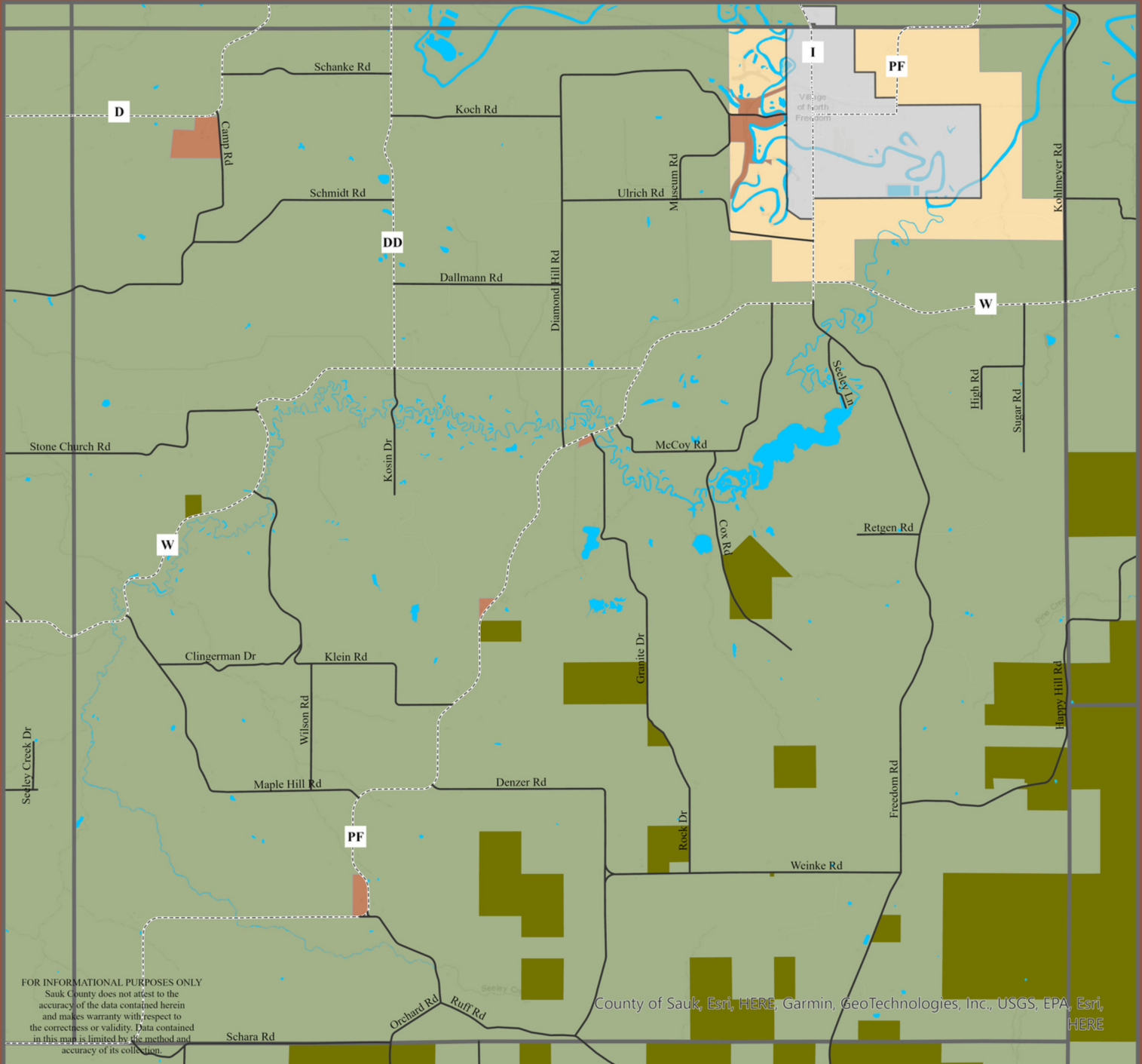
Miles
 0 1.25 2.5

Legend

Farmland Preservation	Municipal Boundaries	Transportation
Farmland Preservation Area	Village	U.S. Highway
Transition Area	City	Interstate
Unincorporated Development Area	Town	State Highway
Public Open Spaces	County Boundaries	County
		Town



Sauk County Farmland Preservation Plan: Town of Freedom



FOR INFORMATIONAL PURPOSES ONLY
 Sauk County does not attest to the accuracy of the data contained herein and makes warranty with respect to the correctness or validity. Data contained in this map is limited by the method and accuracy of its collection.

County of Sauk, Esri, HERE, Garmin, GeoTechnologies, Inc., USGS, EPA, Esri, HERE

Legend

Farmland Preservation

- Farmland Preservation Area
- Transition Area
- Unincorporated Development Area
- Public Open Spaces

Municipal Boundaries

- Village
- City
- Town
- County Boundaries

Miles

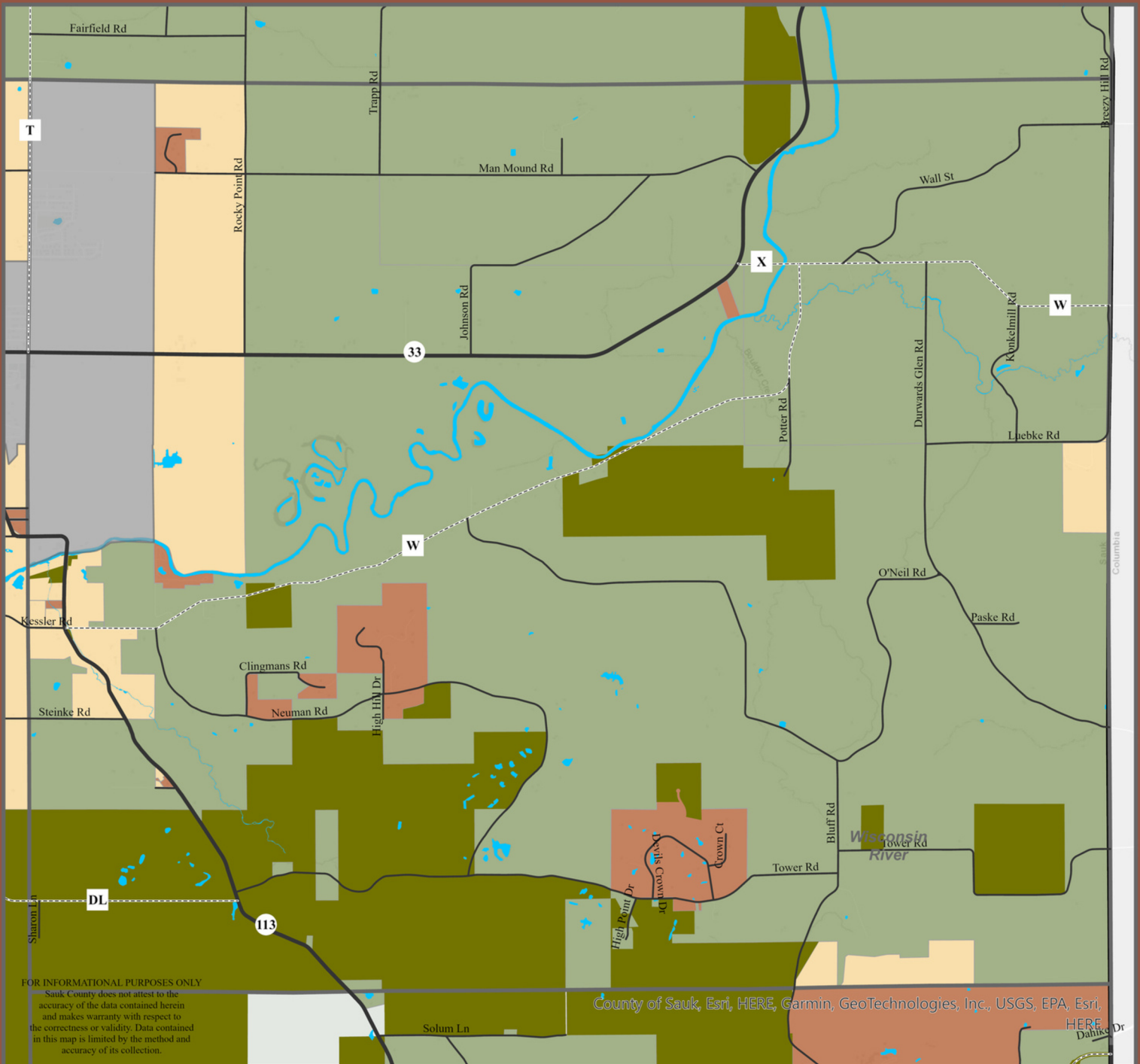
0 0.75 1.5

Transportation

- U.S. Highway
- Interstate
- State Highway
- County
- Town

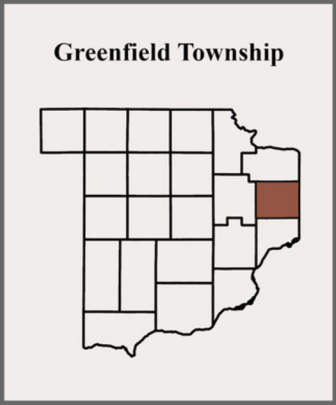


Sauk County Farmland Preservation Plan: Town of Greenfield

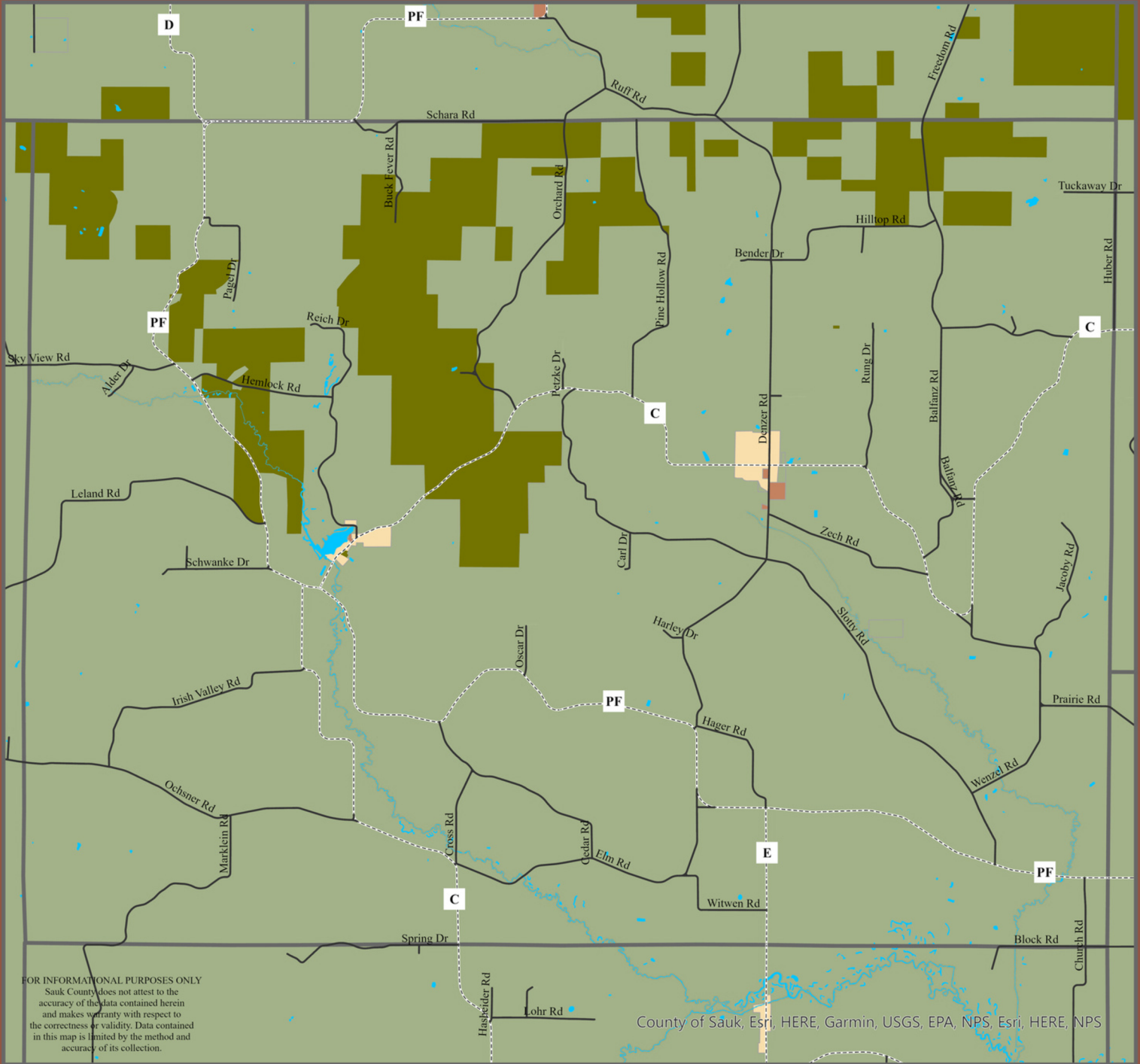


Legend

Farmland Preservation	Municipal Boundaries	Transportation
Farmland Preservation Area	Village	U.S. Highway
Transition Area	City	Interstate
Unincorporated Development Area	Town	State Highway
Public Open Spaces	County Boundaries	County
		Town



Sauk County Farmland Preservation Plan: Town of Honey Creek



FOR INFORMATIONAL PURPOSES ONLY
 Sauk County does not attest to the accuracy of the data contained herein and makes warranty with respect to the correctness or validity. Data contained in this map is limited by the method and accuracy of its collection.

County of Sauk, Esri, HERE, Garmin, USGS, EPA, NPS, Esri, HERE, NPS

Legend

Farmland Preservation

- Farmland Preservation Area
- Transition Area
- Unincorporated Development Area
- Public Open Spaces

Municipal Boundaries

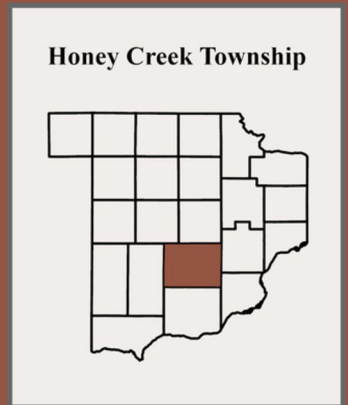
- Village
- City
- Town
- County Boundaries

Miles

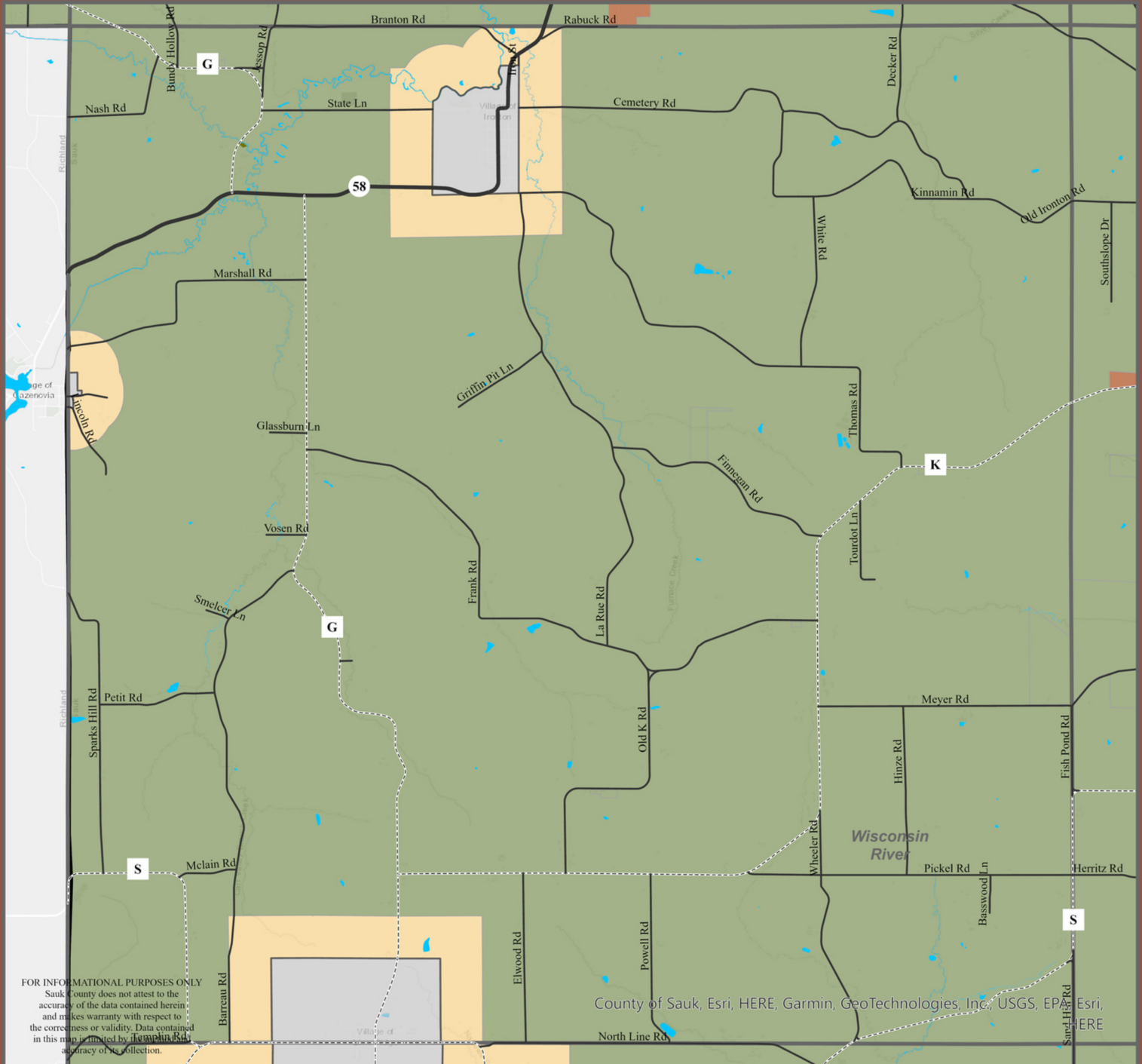
0 0.75 1.5

Transportation

- U.S. Highway
- Interstate
- State Highway
- County
- Town



Sauk County Farmland Preservation Plan: Town of Ironton

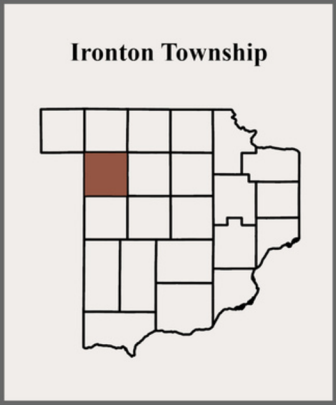
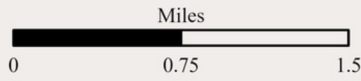


FOR INFORMATIONAL PURPOSES ONLY
 Sauk County does not attest to the accuracy of the data contained herein and makes warranty with respect to the correctness or validity. Data contained in this map is limited by the accuracy of its collection.

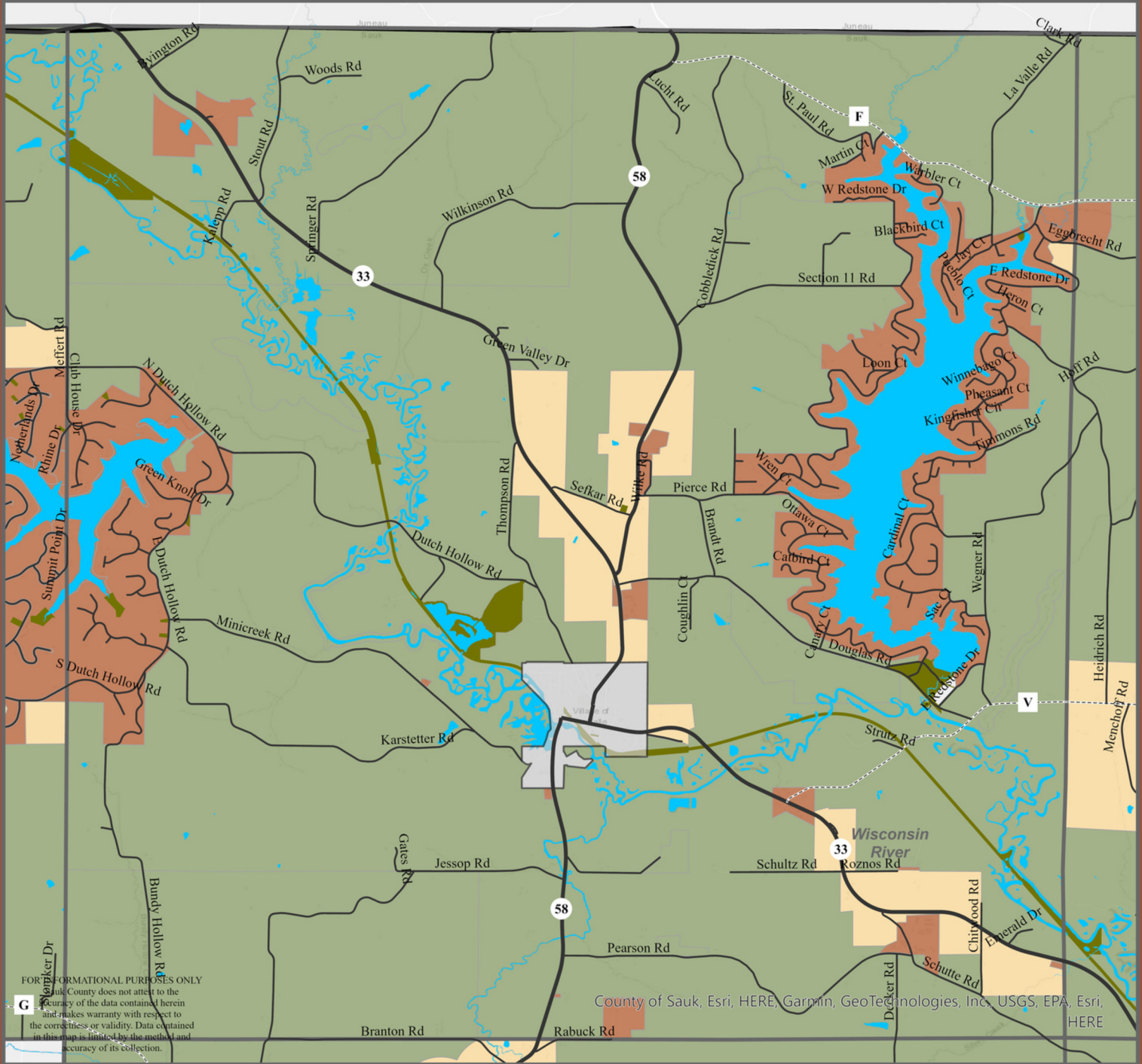
County of Sauk, Esri, HERE, Garmin, GeoTechnologies, Inc., USGS, EPA, Esri, HERE

Legend

Farmland Preservation Area	Village	U.S. Highway
Transition Area	City	Interstate
Unincorporated Development Area	Town	State Highway
Public Open Spaces	County Boundaries	County
		Town



Sauk County Farmland Preservation Plan: Town of La Valle



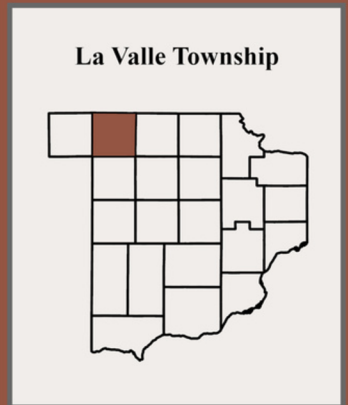
FOR INFORMATIONAL PURPOSES ONLY
 Sauk County does not attest to the accuracy of the data contained herein and makes warranty with respect to the correctness or validity. Data contained in this map is limited by the method and accuracy of its collection.

County of Sauk, Esri, HERE, Garmin, GeoTechnologies, Inc, USGS, EPA, Esri, HERE

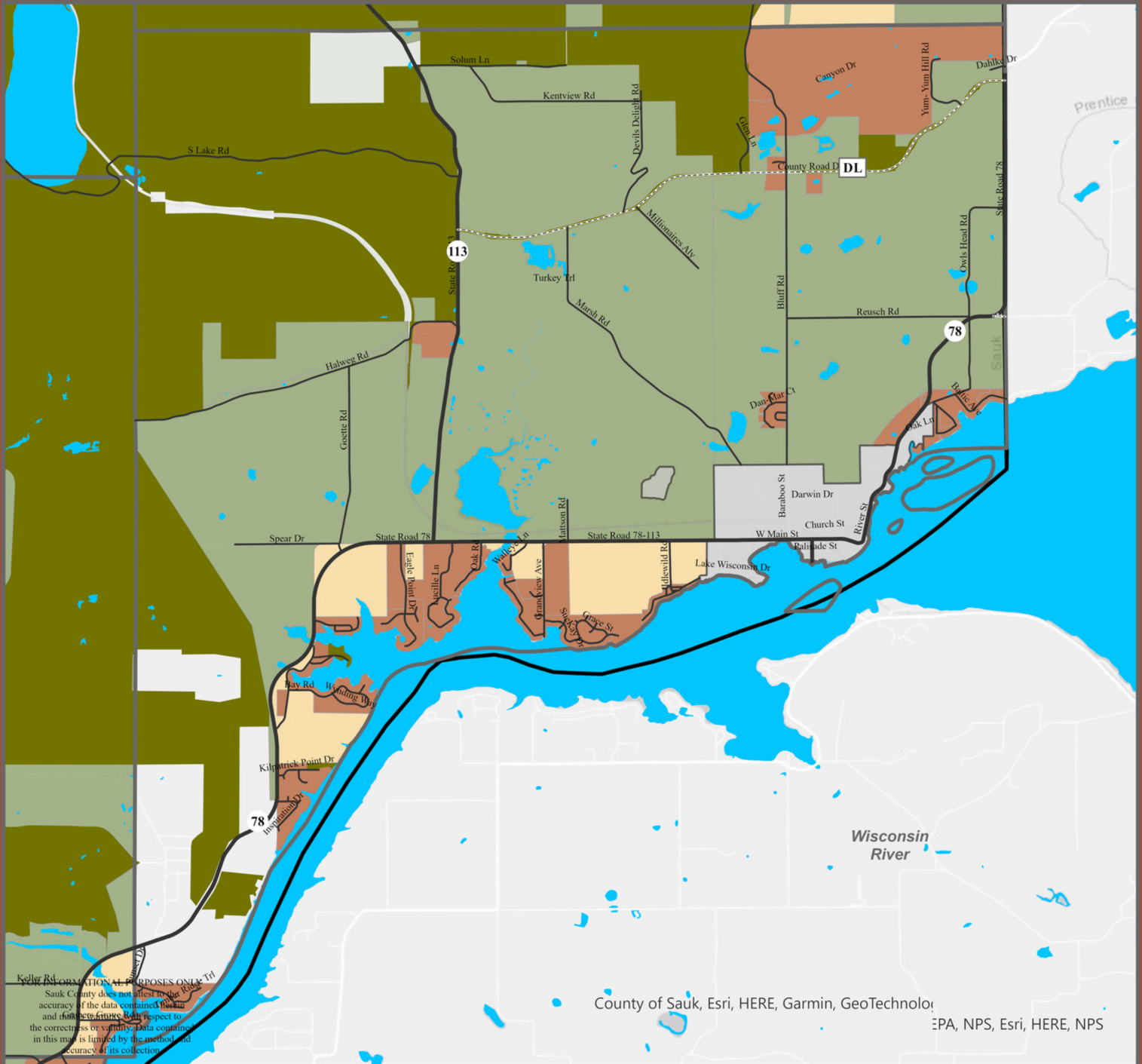
Legend

Farmland Preservation	Municipal Boundaries	Transportation
Farmland Preservation Area	Village	U.S. Highway
Transition Area	City	Interstate
Unincorporated Development Area	Town	State Highway
Public Open Spaces	County Boundaries	County
		Town

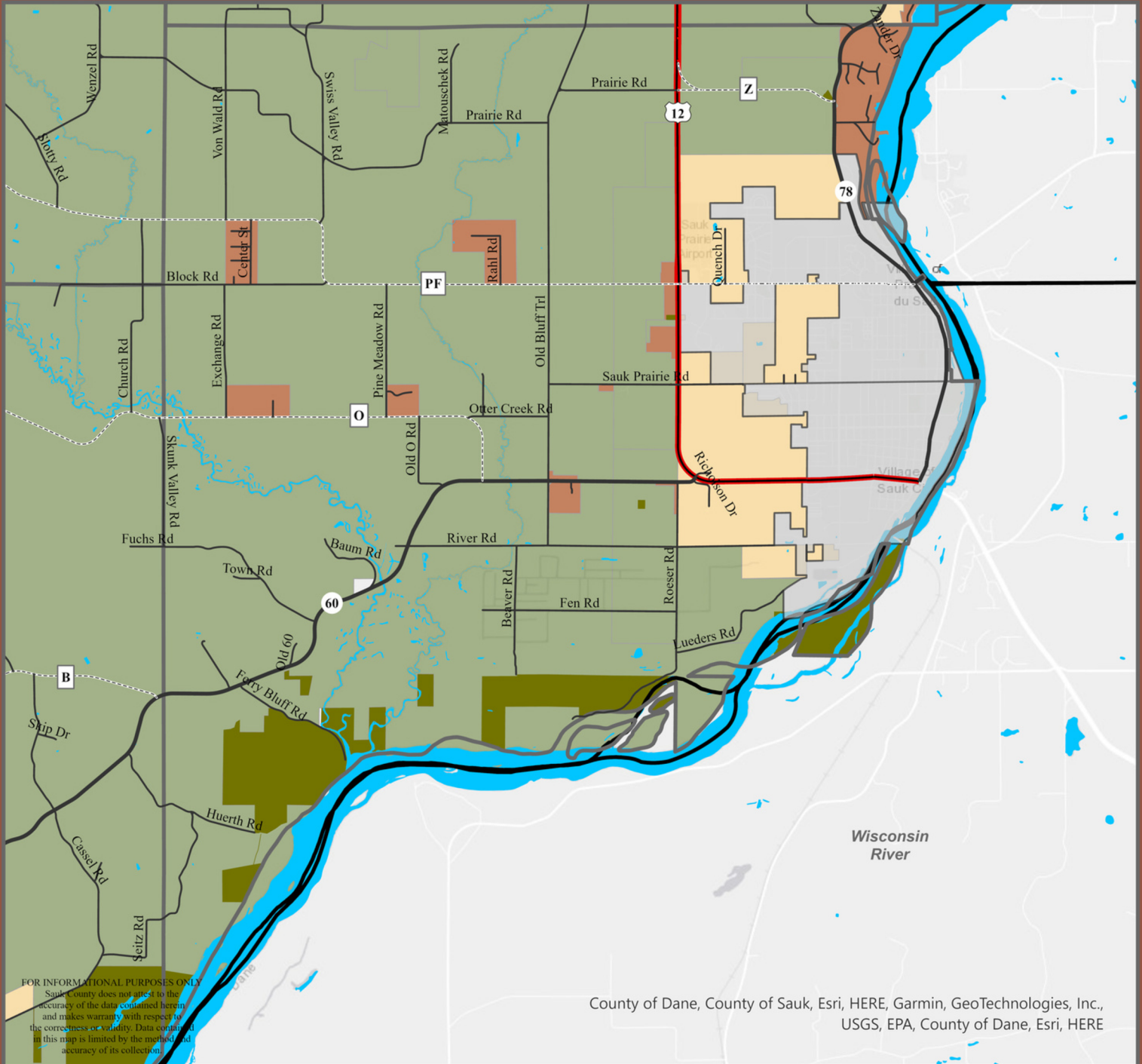
Miles
 0 0.75 1.5



Sauk County Farmland Preservation Plan: Town of Merrimac



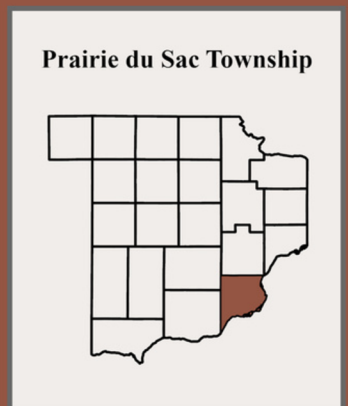
Sauk County Farmland Preservation Plan: Town of Prairie du Sac



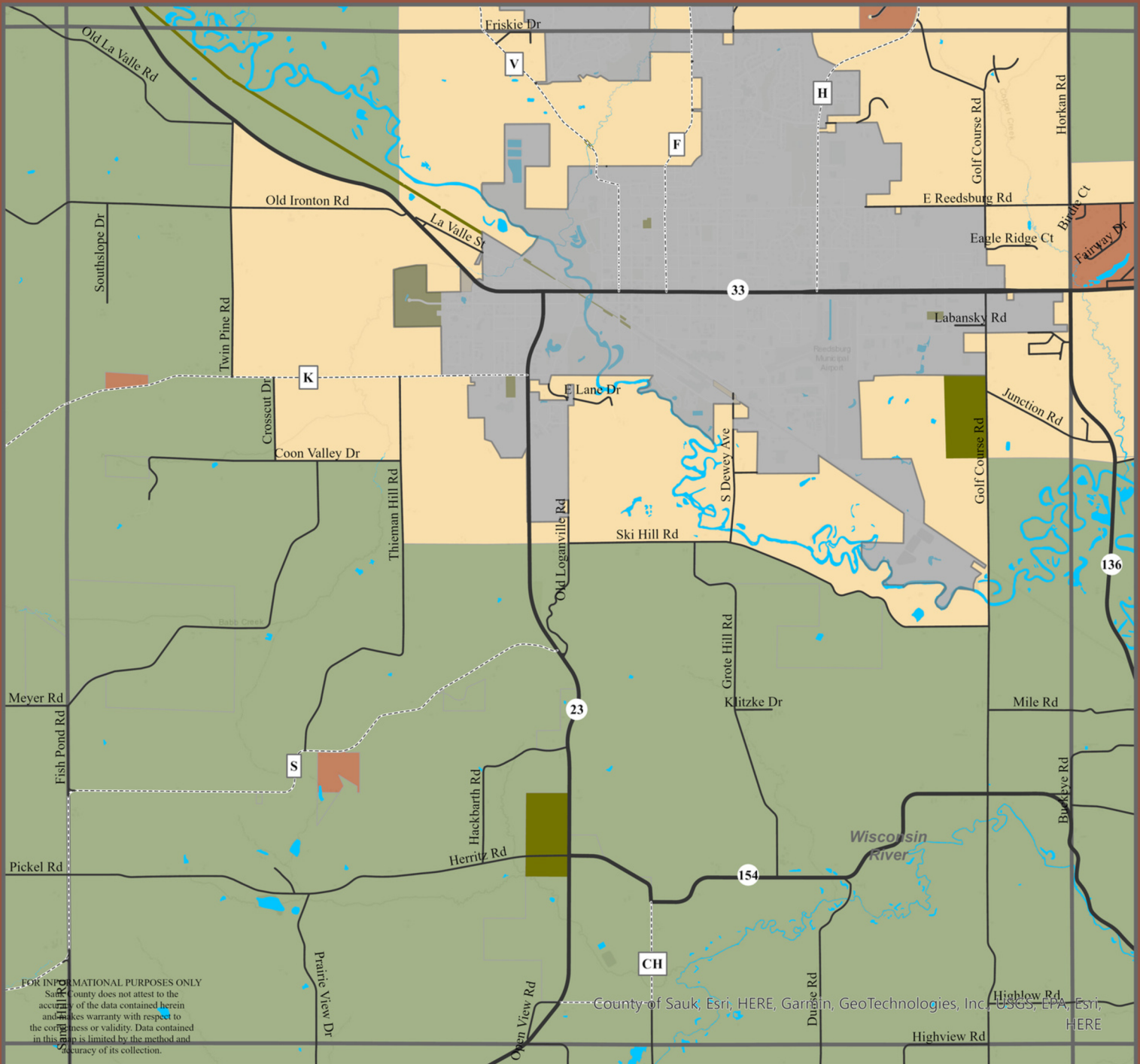
Legend

<p>Farmland Preservation</p> <ul style="list-style-type: none"> Farmland Preservation Area Transition Area Unincorporated Development Area Public Open Spaces 	<p>Municipal Boundaries</p> <ul style="list-style-type: none"> Village City Town County Boundaries 	<p>Transportation</p> <ul style="list-style-type: none"> U.S. Highway Interstate State Highway County Town
--	---	--

Miles
 0 1 2



Sauk County Farmland Preservation Plan: Town of Reedsburg



FOR INFORMATIONAL PURPOSES ONLY
 Sauk County does not attest to the accuracy of the data contained herein and makes warranty with respect to the correctness or validity. Data contained in this map is limited by the method and accuracy of its collection.

County of Sauk, Esri, HERE, Garmin, GeoTechnologies, Inc., USGS, EPA, Esri, HERE

Legend

Farmland Preservation

- Farmland Preservation Area
- Transition Area
- Unincorporated Development Area
- Public Open Spaces

Municipal Boundaries

- Village
- City
- Town
- County Boundaries

Transportation

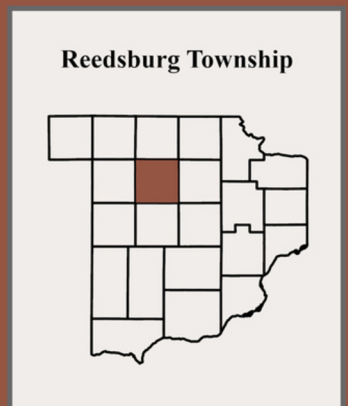
- U.S. Highway
- Interstate
- State Highway
- County
- Town

Miles

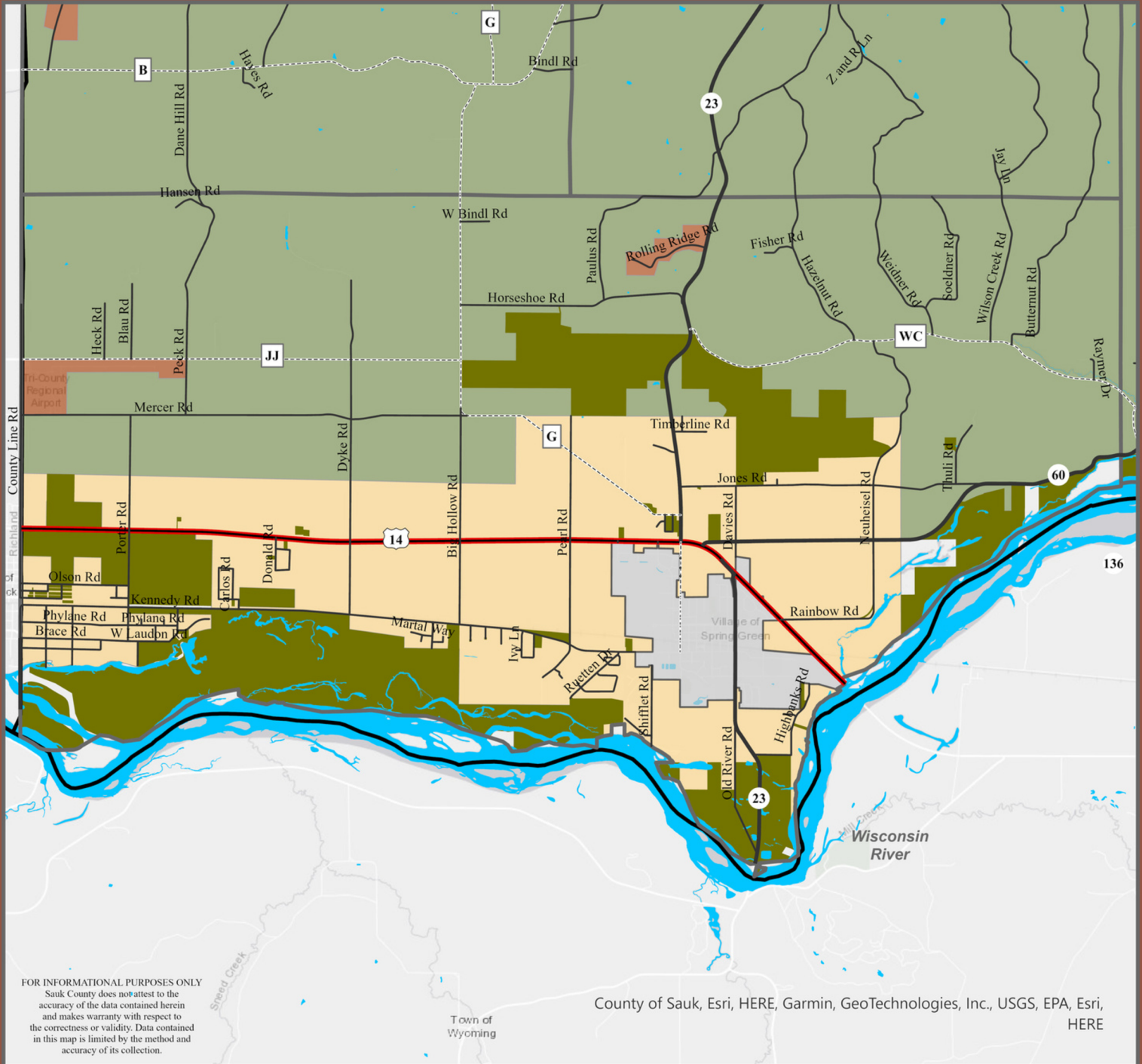
0

0.75

1.5



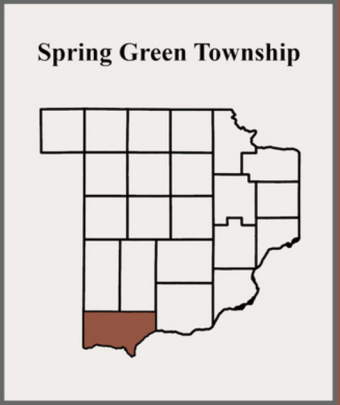
Sauk County Farmland Preservation Plan: Town of Spring Green



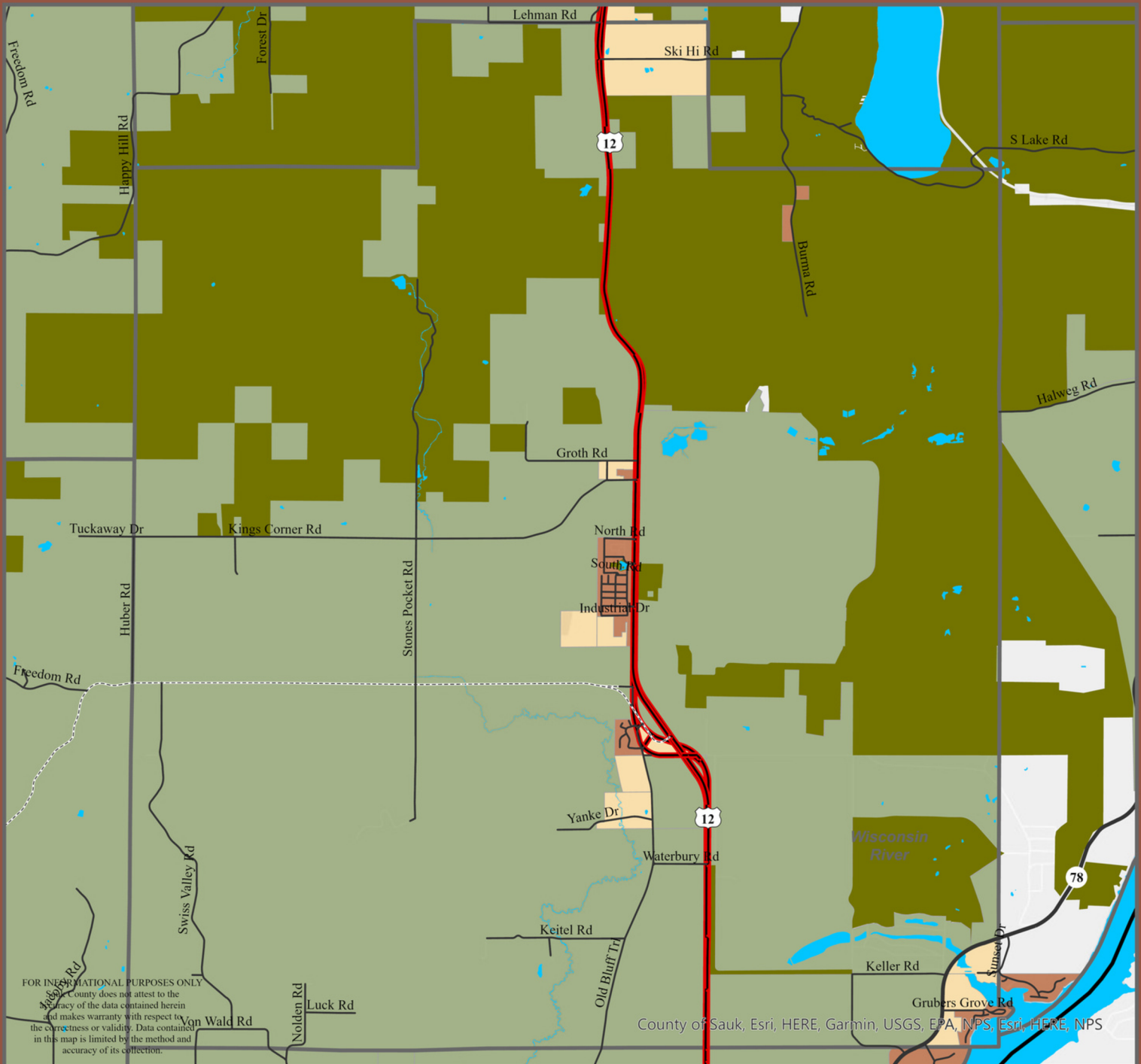
Legend

Farmland Preservation	Municipal Boundaries	Transportation
Farmland Preservation Area	Village	U.S. Highway
Transition Area	City	Interstate
Unincorporated Development Area	Town	State Highway
Public Open Spaces	County Boundaries	County
		Town

Miles
 0 1 2



Sauk County Farmland Preservation Plan: Town of Sumpter



FOR INFORMATIONAL PURPOSES ONLY
 Sauk County does not attest to the accuracy of the data contained herein and makes warranty with respect to the correctness or validity. Data contained in this map is limited by the method and accuracy of its collection.

County of Sauk, Esri, HERE, Garmin, USGS, EPA, NPS, Esri, HERE, NPS

Legend

Farmland Preservation

- Farmland Preservation Area
- Transition Area
- Unincorporated Development Area
- Public Open Spaces

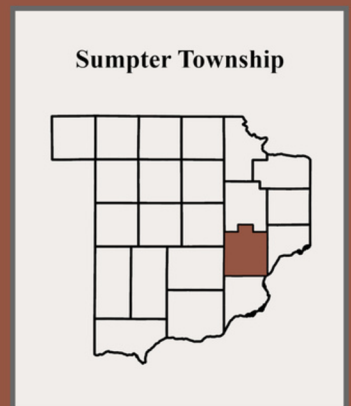
Municipal Boundaries

- Village
- City
- Town
- County Boundaries

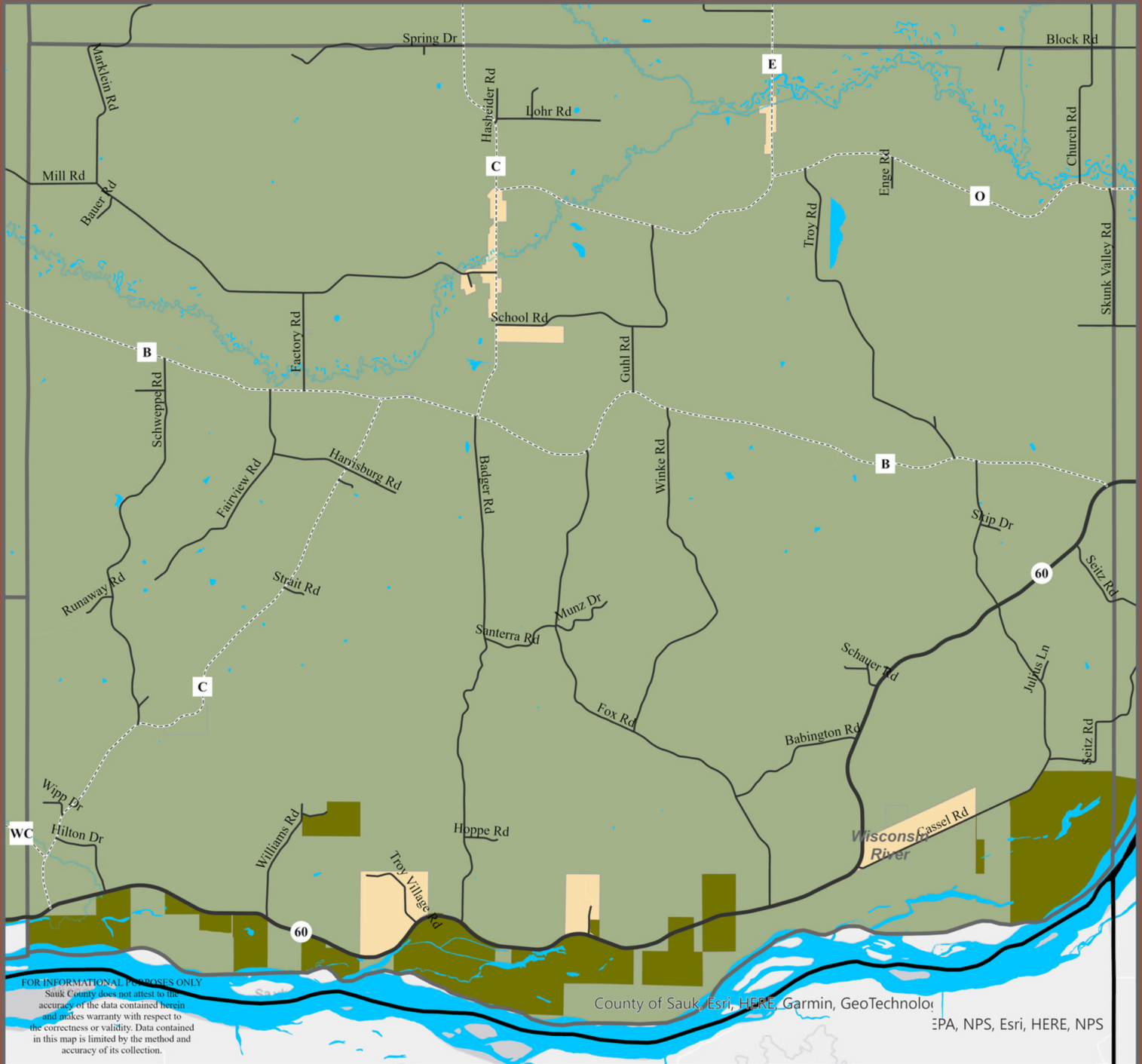
Miles

Transportation

- U.S. Highway
- Interstate
- State Highway
- County
- Town



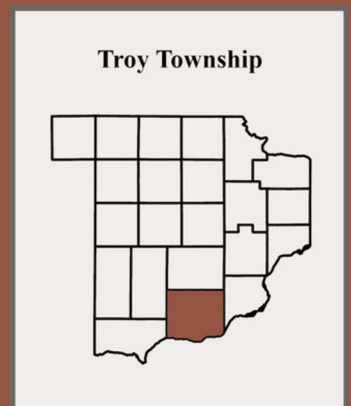
Sauk County Farmland Preservation Plan: Town of Troy



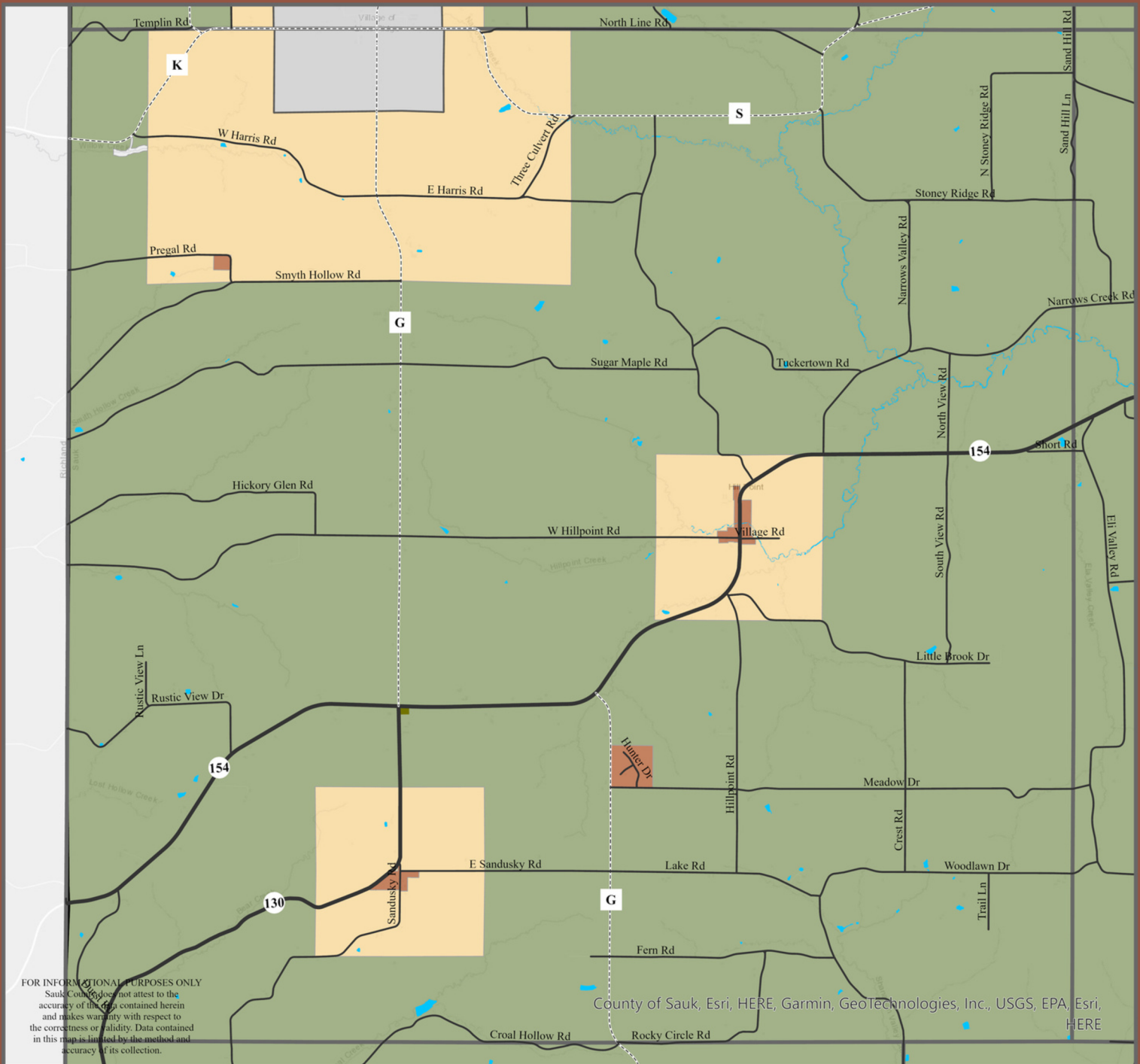
Legend

<p>Farmland Preservation</p> <ul style="list-style-type: none"> Farmland Preservation Area Transition Area Unincorporated Development Area Public Open Spaces 	<p>Municipal Boundaries</p> <ul style="list-style-type: none"> Village City Town County Boundaries 	<p>Transportation</p> <ul style="list-style-type: none"> U.S. Highway Interstate State Highway County Town
--	--	---

Miles
 0 0.75 1.5

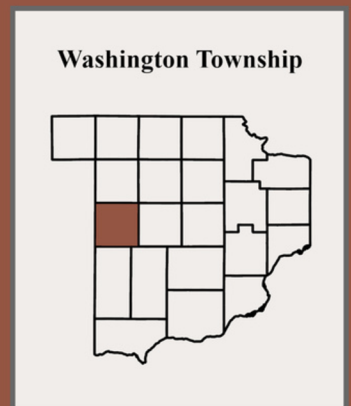
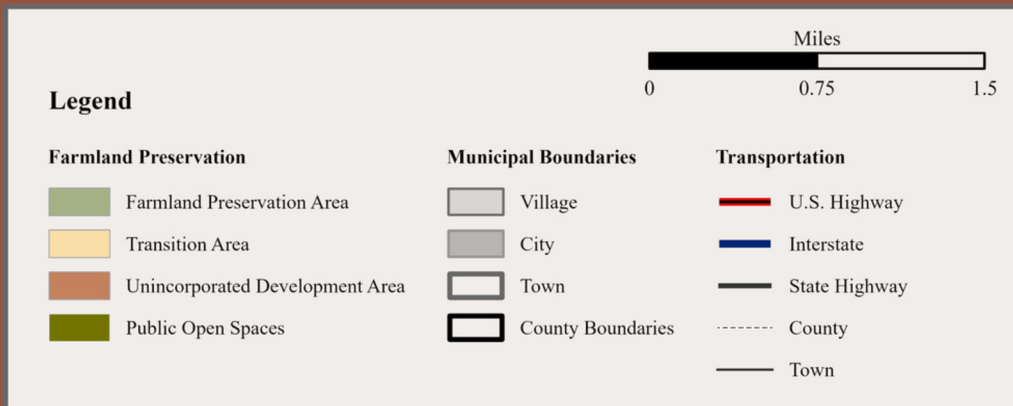


Sauk County Farmland Preservation Plan: Town of Washington

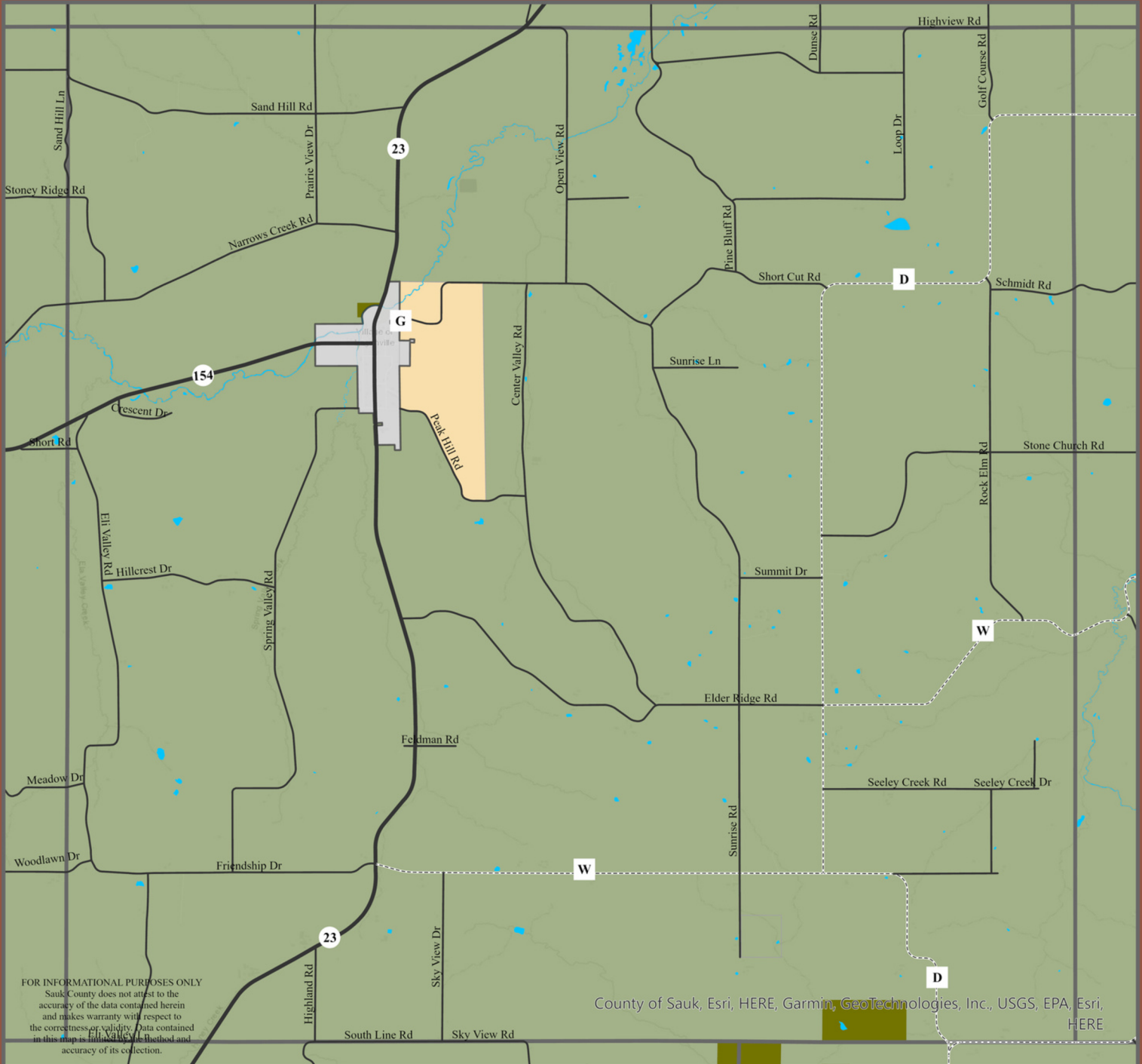


FOR INFORMATIONAL PURPOSES ONLY
 Sauk County does not attest to the accuracy of the data contained herein and makes warranty with respect to the correctness or validity. Data contained in this map is limited by the method and accuracy of its collection.

County of Sauk, Esri, HERE, Garmin, GeoTechnologies, Inc., USGS, EPA, Esri, HERE



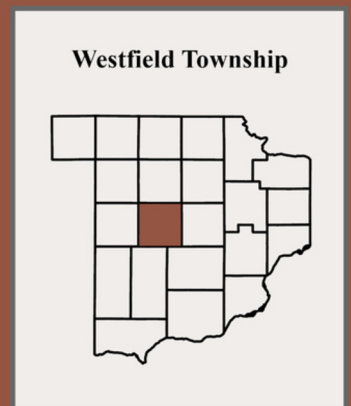
Sauk County Farmland Preservation Plan: Town of Westfield



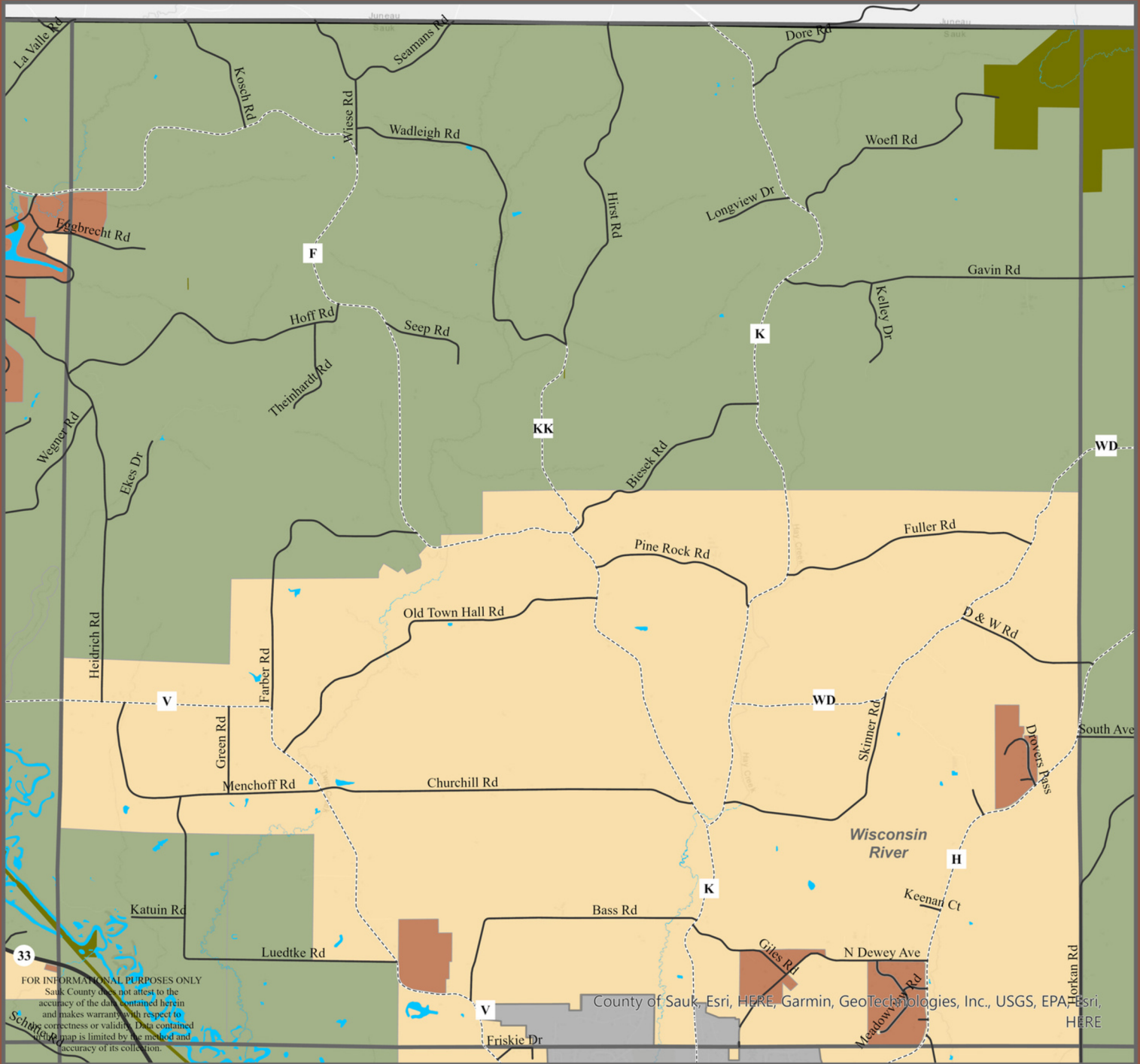
Legend

Farmland Preservation	Municipal Boundaries	Transportation
Farmland Preservation Area	Village	U.S. Highway
Transition Area	City	Interstate
Unincorporated Development Area	Town	State Highway
Public Open Spaces	County Boundaries	County
		Town

Miles
0 0.75 1.5



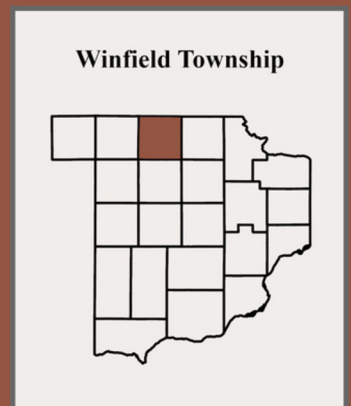
Sauk County Farmland Preservation Plan: Town of Winfield



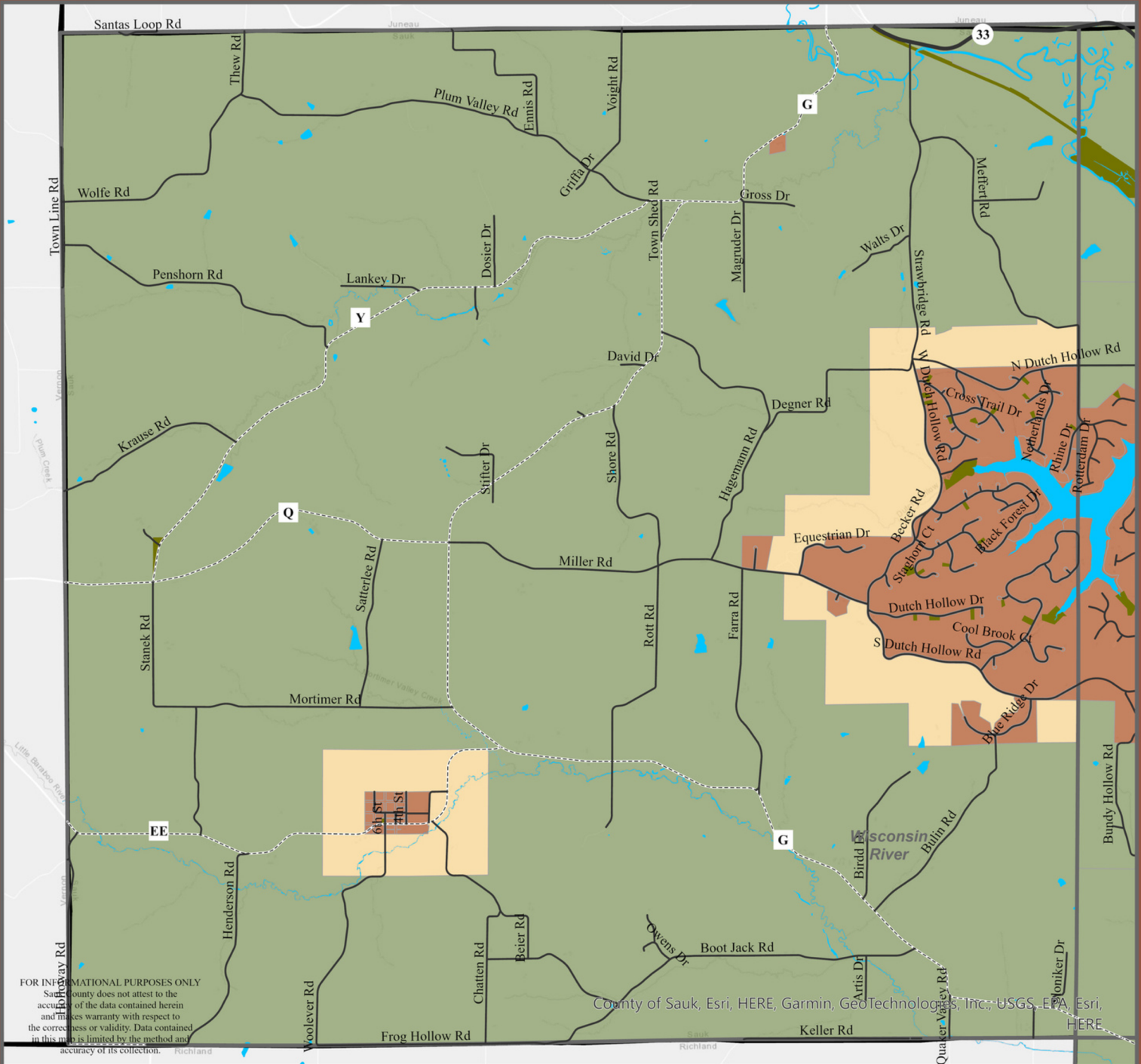
Legend

Farmland Preservation	Municipal Boundaries	Transportation
Farmland Preservation Area	Village	U.S. Highway
Transition Area	City	Interstate
Unincorporated Development Area	Town	State Highway
Public Open Spaces	County Boundaries	County
		Town

Miles
0 0.75 1.5



Sauk County Farmland Preservation Plan: Town of Woodland



FOR INFORMATIONAL PURPOSES ONLY
 Sauk County does not attest to the accuracy of the data contained herein and makes no warranty with respect to the correctness or validity. Data contained in this map is limited by the method and accuracy of its collection.

County of Sauk, Esri, HERE, Garmin, GeoTechnology, Inc., USGS, EPA, Esri, HERE

Legend

Farmland Preservation

- Farmland Preservation Area
- Transition Area
- Unincorporated Development Area
- Public Open Spaces

Municipal Boundaries

- Village
- City
- Town
- County Boundaries

Transportation

- U.S. Highway
- Interstate
- State Highway
- County
- Town



Woodland Township

