

ORDINANCE NO. _____ - 2019

**AMENDING SAUK CO. CODE, CHAPTER 1, SUPERVISORY DISTRICT PLAN,
CHANGING THE SUPERVISORY DISTRICT BOUNDARY BETWEEN DISTRICT 31
AND DISTRICT 29 RESULTING FROM VILLAGE OF PRAIRIE DU SAC
ANNEXATION.**

Background: The Village of Prairie du Sac, by Ordinance No. 5, Series 2019, on October 22, 2019, annexed property located in Town of Prairie du Sac, and in County Supervisory District 31, to Village of Prairie du Sac, which is in County Supervisory District 29. The population of the territory at the time of annexation was five.

The County Board is authorized by Wis. Stat. 59.10(3)(c) to amend its supervisory district plan to reflect an annexation that alters district boundary lines occurring after passage of the 10-year county redistricting plan in order to administer elections. Said boundary changes are allowed by law if the total number of supervisory districts is left unchanged. This boundary change does not change the number of supervisory districts. The Supervisory District boundary should be amended to reflect this annexation, thereby locating this property from County Supervisory District 31 to County Supervisory District 29. An exact map of the parcel, along with a certified copy of the Village of Prairie du Sac Ordinance has been filed with the Clerk of Sauk County, and is attached as Attachment A.

Fiscal Impact: None Budgeted Expenditure Not Budgeted

The County Board of Supervisors of the County of Sauk does hereby ordain as follows:

NOW, THEREFORE, BE IT ORDAINED, by the Sauk County Board of Supervisors, met in regular session, that the above-described duly annexed property, now within the Village of Prairie du Sac, is hereby included in Supervisory District 29 as enumerated above, thereby changing the boundary line between Supervisory Districts 31 and 29; and,

BE IT FURTHER ORDAINED, that the Sauk County Board Chairperson is hereby directed to forward all notices required under Wis. Stat. § 59.10(3)(c)4. to the Secretary of State for the purpose of advising that office of said boundary changes.

For consideration by the Sauk County Board of Supervisors on December 17, 2019.

Respectfully submitted,

EXECUTIVE & LEGISLATIVE COMMITTEE

PETER VEDRO, Chair

WILLIAM HAMBRECHT

WALLY CZUPRYNKO

WILLIAM WENZEL

THOMAS KRIEGL

Fiscal Note: No fiscal impact.

MIS Note: No information systems impact.



ORDINANCE NO. 5, SERIES 2019

**ANNEXING CERTAIN LANDS LOCATED
IN THE TOWN OF PRAIRIE DU SAC, SAUK COUNTY, WISCONSIN**

WHEREAS, a Petition for Direct Annexation by Unanimous Approval (the "Petition"), pursuant to the provisions of § 66.0217(2), Wis. Stats., was filed with the Village of Prairie du Sac on October 2, 2019; and

WHEREAS, the Petition complies with the requirements of § 66.0217(5), Wis. Stats., with respect to the information contained therein; and

WHEREAS, the Village Board finds that necessary governmental services can be provided to the territory sought to be annexed in a cost-effective manner, including certain services not available from the Town of Prairie du Sac; and

WHEREAS, the petitioning landowner expressed the need for improved municipal services in order to develop the subject territory; and

WHEREAS, the Wisconsin Department of Administration has reviewed the information submitted pertaining to the proposed annexation, pursuant to § 66.0217(6), Wis. Stats., and has determined that the proposed annexation is in the public interest; and

WHEREAS, the Village of Prairie du Sac Plan Commission has recommended the acceptance of the Petition; and

WHEREAS, the Village Board finds that the proposed annexation will promote the economic prosperity of the Village.

NOW, THEREFORE, the Village Board of the Village of Prairie du Sac do ordain as follows:

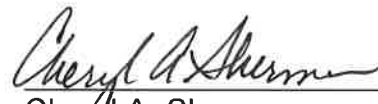
1. Annexation and Description of Annexed Territory. The Petition is hereby accepted, and the territory described on Exhibit A attached hereto and incorporated herein, is hereby annexed to the Village of Prairie du Sac.
2. Map. Exhibit A attached hereto and incorporated herein is a map reasonably showing the boundaries of such annexed territory and the relation of the annexed territory to the municipalities affected thereby.
3. Population. The current population of the territory hereby annexed is 5.
4. Filing. The Village Clerk shall file immediately with the Wisconsin Secretary of State, Register of Deeds for Sauk County, Wisconsin, Clerk for Sauk County, Wisconsin and each company supplying utility service to the

annexed territory, a copy of this Ordinance along with the map and description of the territory annexed, all as attached as Exhibits A.

5. Ward. The annexed territory is hereby added to Ward 4 of the Village of Prairie du Sac.
6. Supervisory District. The Village of Prairie du Sac petitions the Sauk County Board of Supervisors that the annexed territory be moved from Supervisor District 31 to Supervisor District 29.
7. Zoning. The annexed territory shall remain zoned A-T Agricultural Transition.
8. Validity. If any provision of this ordinance shall be held invalid, such invalidity shall not affect the remaining provisions thereof.

Adopted this 22nd day of October, 2019.
Published this 31st day of October, 2019.

Village of Prairie du Sac, WI


Cheryl A. Sherman
Village President




Nikki Conway
Village Clerk

EXHIBIT "A"



WILLIAMSON SURVEYING AND ASSOCIATES, LLC

NOA T. PRIEVE & CHRIS W. ADAMS, PROFESSIONAL LAND SURVEYORS
104 A WEST MAIN STREET, WAUNAKEE, WISCONSIN, 53597 PHONE: 608-255-5705

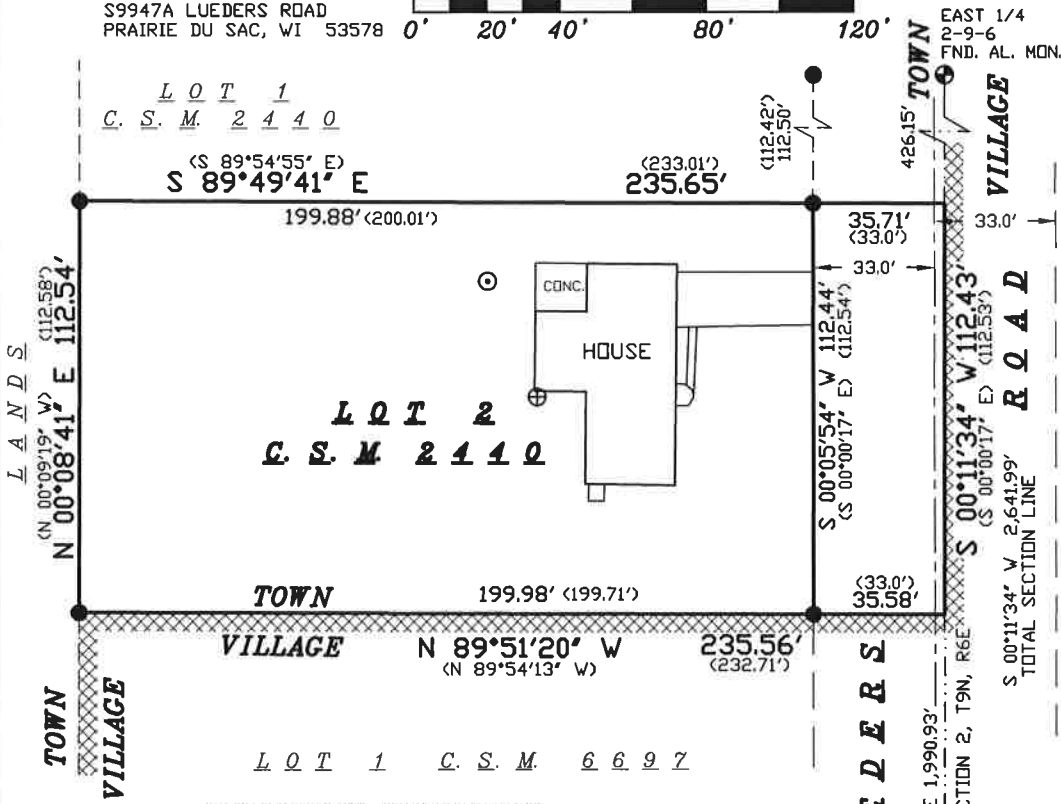
Located in the NE 1/4 of the SE 1/4 of Section 2, T9N, R6E, Town of Prairie Du Sac, Sauk County, Wisconsin. Including all of Lot 2, Certified Survey Map #2440.

ANNEXATION MAP

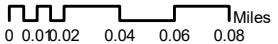
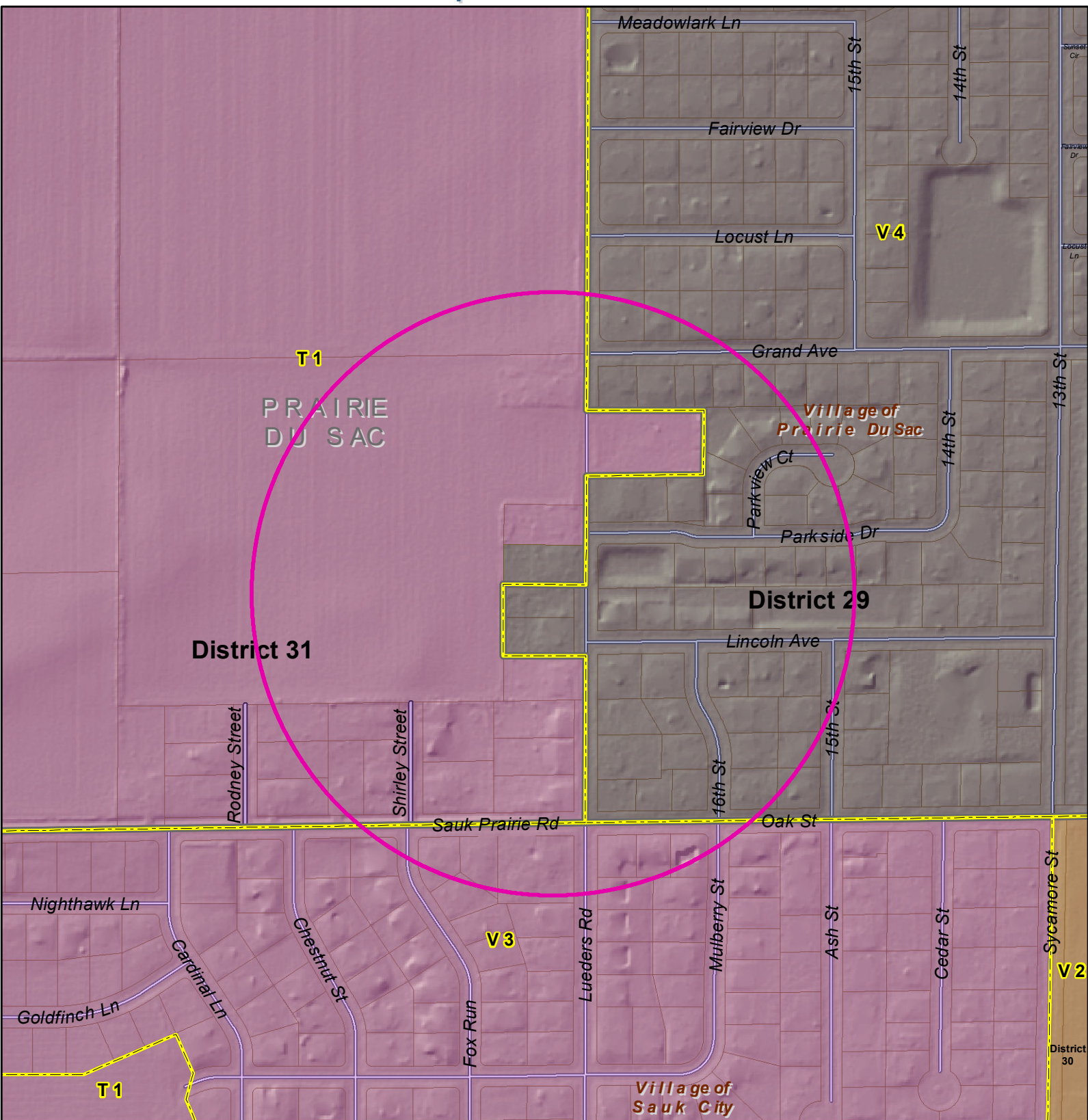
PREPARED FOR:

MARCUS KRUEGER
S9947A LUEDERS ROAD
PRAIRIE DU SAC, WI 53578

SCALE 1" = 40'

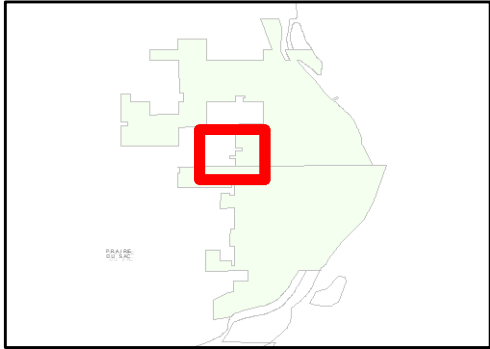


WCCS - SAUK COUNTY ZONE
BEARINGS ARE REFERENCED TO THE EAST LINE
OF SECTION 2 WHICH BEARS S 00°11'34" W



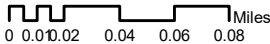
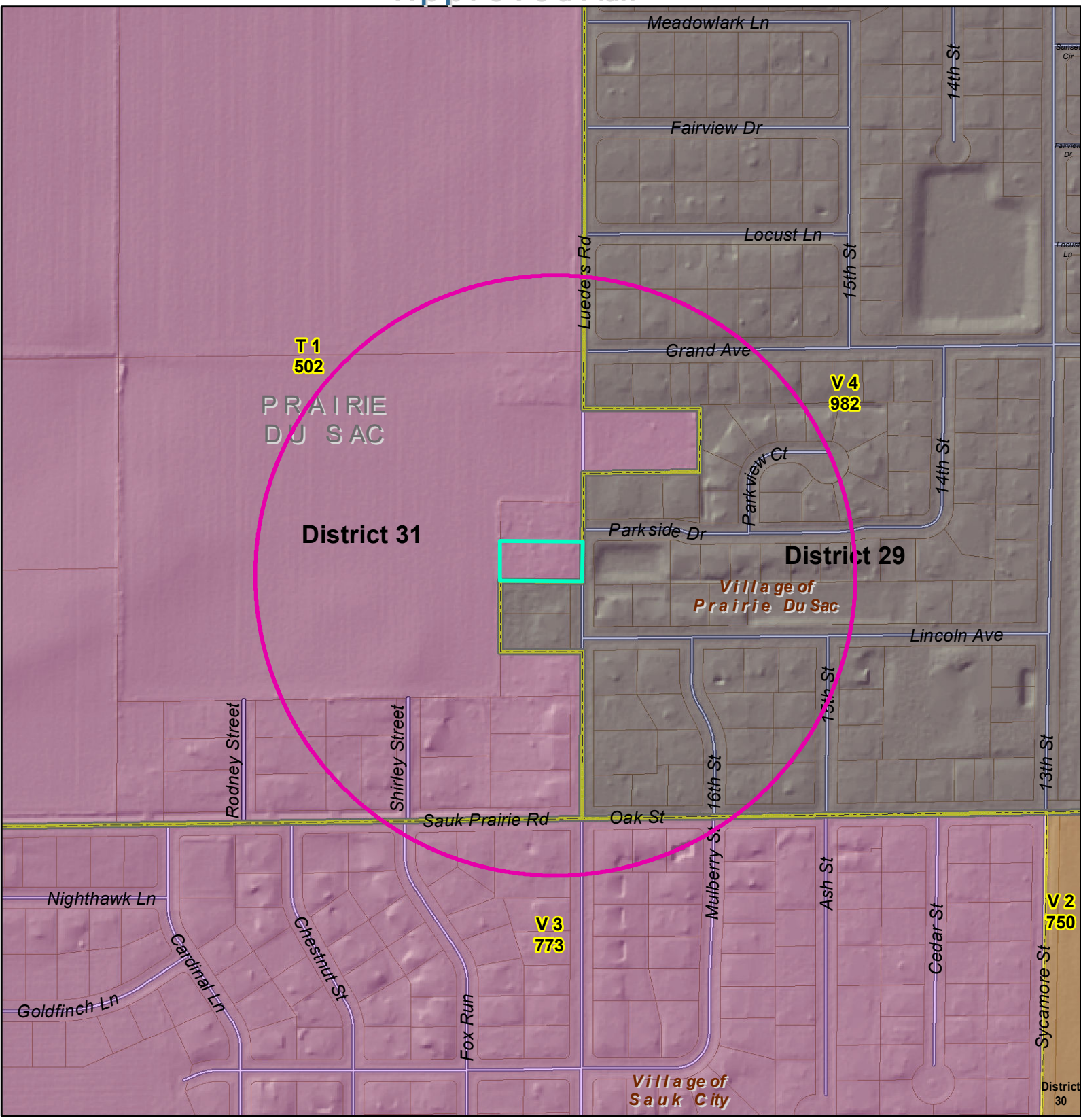
- Legend**
- Supervisor Location Type**
 - Aldersperson (black arrow)
 - Supervisor (red diamond)
 - Polling Places (blue flag)
 - Municipal Boundaries** (black outline)
 - Tax Parcel** (thin grey outline)
 - Wards_Proposed** (yellow dashed line)

Supervisors_Proposed District Name	
Supervisory District 1	Supervisory District 14
Supervisory District 10	Supervisory District 15
Supervisory District 11	Supervisory District 16
Supervisory District 12	Supervisory District 17
Supervisory District 13	Supervisory District 18
Supervisory District 2	Supervisory District 19
Supervisory District 20	Supervisory District 20
Supervisory District 21	Supervisory District 21
Supervisory District 22	Supervisory District 22
Supervisory District 23	Supervisory District 23
Supervisory District 24	Supervisory District 24
Supervisory District 25	Supervisory District 25
Supervisory District 26	Supervisory District 26
Supervisory District 27	Supervisory District 27
Supervisory District 28	Supervisory District 28
Supervisory District 29	Supervisory District 29
Supervisory District 30	Supervisory District 30
Supervisory District 31	Supervisory District 31
Supervisory District 3	Supervisory District 3
Supervisory District 4	Supervisory District 4
Supervisory District 5	Supervisory District 5
Supervisory District 6	Supervisory District 6
Supervisory District 7	Supervisory District 7
Supervisory District 8	Supervisory District 8
Supervisory District 9	Supervisory District 9





Sauk County Land Information\GIS Department Approved Plan



Legend

- Supervisor Location Type**
- Aldersperson
 - Supervisor
 - Polling Places
 - TaxParcel
 - Municipal Boundaries
 - Wards

- Supervisors - 2010 District Name**
- Supervisory District 1
 - Supervisory District 10
 - Supervisory District 11
 - Supervisory District 12
 - Supervisory District 13
 - Supervisory District 14
 - Supervisory District 15
 - Supervisory District 16
 - Supervisory District 17
 - Supervisory District 18
 - Supervisory District 19
 - Supervisory District 2
 - Supervisory District 20
 - Supervisory District 21
 - Supervisory District 22
 - Supervisory District 23
 - Supervisory District 24
 - Supervisory District 25
 - Supervisory District 26
 - Supervisory District 27
 - Supervisory District 28
 - Supervisory District 29
 - Supervisory District 3
 - Supervisory District 30
 - Supervisory District 31
 - Supervisory District 4
 - Supervisory District 5
 - Supervisory District 6
 - Supervisory District 7
 - Supervisory District 8
 - Supervisory District 9

